

# DualForce™

## Sectional Matrix System

### Better Seal. Tighter Contacts.

DualForce™ Sectional Matrix System delivers increased separation force to provide tight posterior contacts while reducing composite flash and finishing time.



Dentistry and photography courtesy of Nate Lawson, DMD, PhD

“The DualForce Sectional Matrix System provides tight contacts and anatomical contours.”

- Nate Lawson, DMD, PhD



### Increased Separation Force

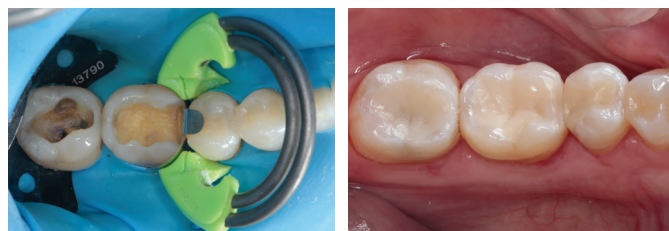
Dual nickel titanium rings produce 5 lbs of separation force, while the rigid internal spine of the Active-Wedges™ produce an additional 2 lbs, resulting in consistently tight contacts.

Brand		Separation Force of Ring
DualForce™ Sectional Matrix System Clinician's Choice®		5.0 lbs/ 2.26 kg
Palodent® Plus Dentsply Sironia		4.5 lbs/ 2.04 kg
Composi-Tight® 3D Fusion™ Short Ring Garrison Dental Solutions		3.6 lbs/ 1.63 kg
Composi-Tight® 3D Fusion™ Tall Ring Garrison Dental Solutions		5.3 lbs/ 2.40 kg
Composi-Tight® 3D Fusion™ Wide Prep Ring Garrison Dental Solutions		3.59 lbs/ 1.62 kg

Internal data.  
Palodent® is a registered trademark owned by Dentsply Sirona, Inc. Composi-Tight® is a registered trademark owned by Garrison Dental Solutions.

### Reduced Flash & Finishing Time

All components in the DualForce System work together to provide a tight seal and better adaptation to the preparation walls reducing composite flash and finishing time.



Dentistry and photography courtesy of Parag Kachalia, DDS

### Anatomically Correct Contacts

The DualForce Ultra-Wrap™ Matrix Bands are heat-hardened to prevent crimping during placement. Their shape ensures a natural contact every time.



Dentistry and photography courtesy of Nate Lawson, DMD, PhD

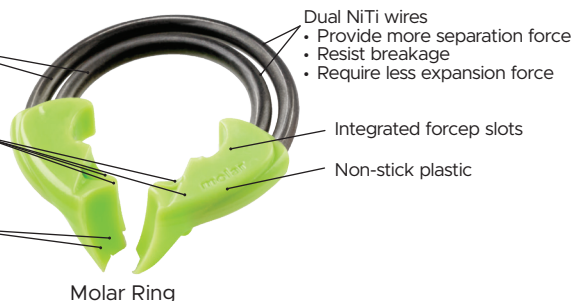
# DualForce™ Rings

Dual rings apply balanced separation force on mesial and distal contact areas

Independent articulating interproximal separators for improved tooth seal and adaptation

Angle of the interproximal separating prongs match tooth morphology for:

- Significantly more ring stability
- Tighter matrix band seal
- Pop-off prevention



Pre-Molar Ring

# DualForce™ Active-Wedges™

Vaulted tip prevents tissue lacerations and improves interproximal placement

Tip collapses during insertion and expands when seated to help seal matrix band/tooth interface

Rigid internal spine improves matrix band seal at proximal box while producing 2lbs of separation force

Flexible "feathers" that adapt to matrix assisting with matrix/tooth seal

Ribbed to lock with cotton pliers for stable placement



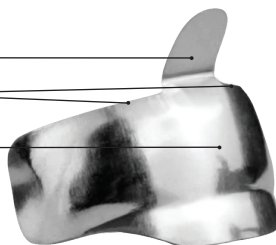
# DualForce™ Ultra-Wrap™ Matrix Bands

Matrix tab for easy placement

Curved marginal ridge to reduce finishing time

Proximal contour for optimal contact position

Available in 3 sizes:  
4.5 mm, 5.5 mm, 6.5 mm



Scan to learn more about the DualForce Matrix System



## STARTER KIT WITH ULTRA-WRAP BANDS (209021)

Contains: 1 x Pre-Molar Ring (orange),  
1 x Molar Ring (green),  
25 x 4.5 mm Ultra-Wrap Matrix Bands,  
25 x 5.5 mm Ultra-Wrap Matrix Bands,  
25 x 6.5 mm Ultra-Wrap Matrix Bands,  
20 x Active-Wedge #1 (Purple),  
20 x Active-Wedge #2 (White),  
20 x Active-Wedge #3 (Blue),  
20 x Active-Wedge #4 (Green),  
20 x Active-Wedge #5 (Black).

## COMPLETE KIT WITH ULTRA-WRAP BANDS (209022)

Contains: 1 x Starter Kit (see above for full list of contents),  
1 x Punch Pliers, 1 x Ring Forceps.

RING FORCEPS (209009)  
PUNCH PLIERS (209013)  
MATRIX FORCEPS (209024)

## ACTIVE-WEDGE INTRO KIT (209000)

Contains: 40 x each size wedge  
(#1, #2, #3, #4, #5)

## ACTIVE-WEDGE 100-PACK REFILLS

#1 (209001)  
#2 (209002)  
#3 (209003)  
#4 (209004)  
#5 (209005)

## RING 2-PACK REFILLS

Pre-molar (209007)  
Molar (209008)  
Assorted (209006)

## ULTRA-WRAP MATRIX BAND 100-PACK REFILLS

4.5 mm (209018)  
5.5 mm (209019)  
6.5 mm (209020)

## ULTRA-WRAP MATRIX BAND TRIAL KIT (209023)

Contains: 25 of each size band  
(4.5 mm, 5.5 mm, 6.5 mm)

To view the latest news, education and more, visit:

[www.clinicianschoice.com](http://www.clinicianschoice.com)



 **Clinician's Choice®**