

# MPa Universal™

## Light-Cure Adhesive

BONDING

### Direct Light-cure Restorations

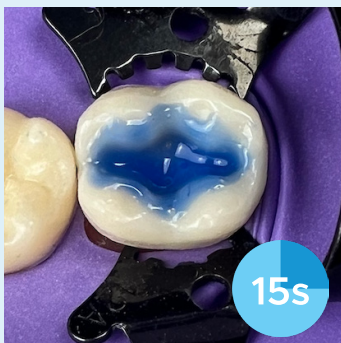
#### Selective Etch



15s

1a. Apply etching gel (ex: Max Etch) onto the enamel surfaces and leave in place for 15 seconds. Rinse for 20 seconds with water and dry with a water-free, oil-free airstream. The etched surface should have a chalky white appearance.

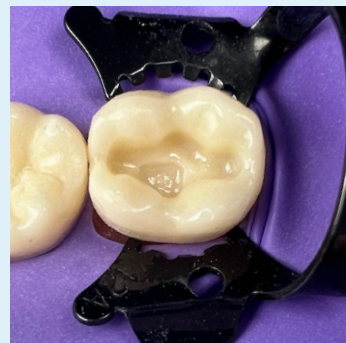
#### Total Etch



15s

1b. Apply etching gel (ex: Max Etch) onto the enamel and dentin surfaces beginning with the enamel bevels for 15 seconds. Rinse for 20 seconds with water. Dry with a water-free, oil-free airstream.

#### Self-Etch



1c. No etching step required. Move to step 2.



20s

2. Apply MPa Universal with a microbrush onto the entire enamel and dentin surface in a thin layer. Agitate for at least 20 seconds.



5s

3. Air thin gently for at least 5-10 seconds.



10s<sup>1</sup>

4. Light-cure with a suitable light unit.

<sup>1</sup>You should always refer to the manufacturer's instructions for use for the curing light you are using. General guidelines are below.

Curing Light Intensity (mW/cm <sup>2</sup> )	Recommended Curing Time
<1000	20 seconds
≥1000	10 seconds

## Indirect Restorations

using a dual- or self-cure cement

### Selective Etch



1a. Apply etching gel (ex: Max Etch) onto the enamel surfaces and leave in place for at least 15 seconds. Rinse for 20 seconds with water and dry with a water-free, oil-free airstream. The etched surface should have a chalky white appearance.

### Total Etch



or

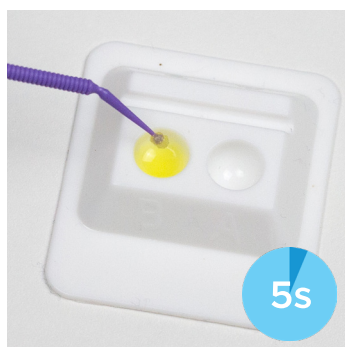
1b. Apply etching gel (ex: Max Etch) onto the enamel and dentin surfaces beginning with the enamel bevels for at least 15 seconds. Rinse for 20 seconds with water. Dry with a water-free, oil-free airstream.

### Self-Etch



or

1c. No etching step required. Move to step 2.



2. Combine one drop of MPa Universal and one drop of MPa Universal Dual-Cure Catalyst in a mixing well and mix for 5-10 seconds under subdued light.



3. Apply the MPa Universal/MPa Universal Dual-Cure Catalyst mixture with a microbrush, agitate for at least 30 seconds. Repeat procedure 1-2 times.



4. Gently air thin for at least 5-10 seconds.



4. Light-cure with a suitable light unit.

<sup>1</sup>You should always refer to the manufacturer's instructions for use for the curing light you are using. General guidelines are below.

Curing Light Intensity (mW/cm <sup>2</sup> )	Recommended Curing Time
<1000	20 seconds
≥1000	10 seconds