

MPa Universal™

Light-Cure Adhesive

Reliable. Efficient. Affordable.

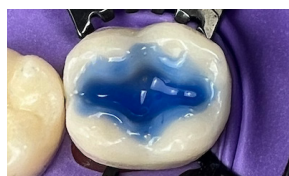
MPa Universal™ is a single-component, light-cure adhesive developed for use with self-etch, selective etch or total etch bonding techniques.



Self-Etch



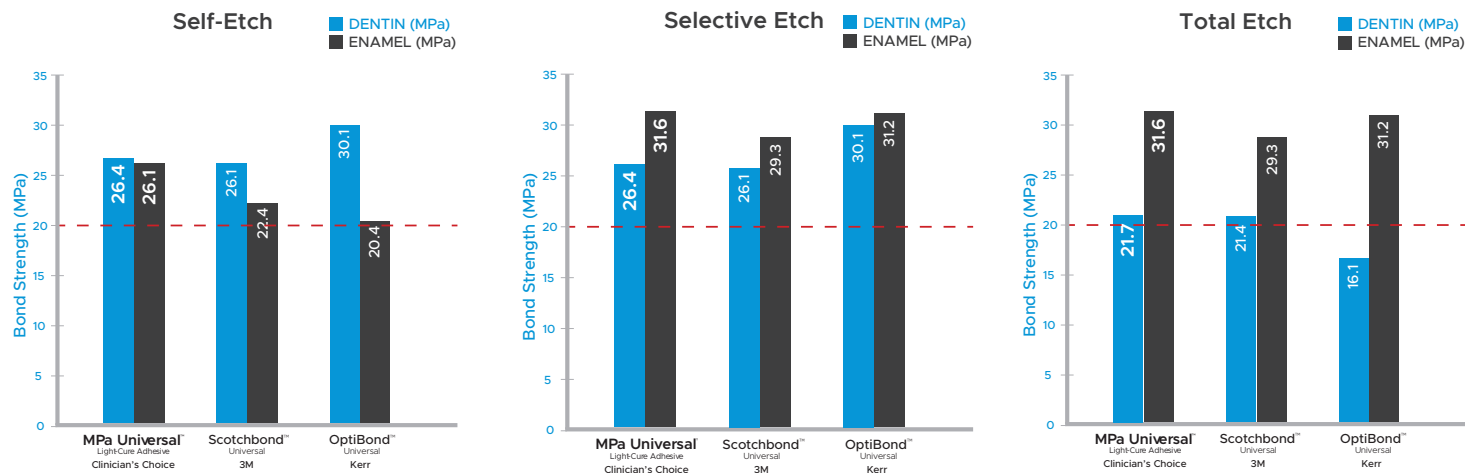
Selective Etch



Total Etch

Consistently High Bond Strengths

MPa Universal combines clinically proven chemistry of 10-MDP, HEMA, and ethanol as the solvent to generate high bond strength to dentin and enamel while providing a consistent dentin seal to reduce the chance of post-operative sensitivity.



Internal data. Scotchbond™, 3M™, OptiBond™, and Kerr™ are not trademarks of Clinician's Choice.
 -- Bond strength needed for direct restorations.

Efficient & Affordable

MPa Universal combines excellent clinical results, easy application with precision dispensing, and is value priced in a bottle or unit-dose.



Low Film Thickness

The low film thickness of MPa Universal (< 10 microns) ensures ease of application without compromising the fit of indirect restorations¹.

¹For applications where light-cure cannot be ensured, use in combination with MPa Universal Dual-Cure Catalyst.



No Refrigeration Required

By reviewing the instructions for use of any dental adhesive, you will find that many require refrigeration to maintain consistent bond values from the first to the last drop. The MPa Universal chemistry, coupled with ethanol as the solvent, allows for storage at room temperature without affecting performance.

Related Products



Max Etch

35% Phosphoric Acid

Max Etch 35% Phosphoric Acid can be used for both total etch and selective etch placement techniques. It has a gel-like viscosity making it ideal for etching enamel during selective etch placement.



G5™ All-Purpose Desensitizer

G5™ All-Purpose Desensitizer is a glutaraldehyde-based desensitizer with over 15 years of clinically proven success. It is recommended when removing the smear layer, which occurs with the total etch technique, to help eliminate post-operative sensitivity and can increase the longevity of the bond.



Scan to learn
more about
MPa Universal



MPa UNIVERSAL BOTTLE
1 x 5 mL Bottle (267001)

MPa UNIVERSAL UNIT-DOSE
50 x 0.1 g unit-doses, 50 microbrushes (267000)

MPa UNIVERSAL DUAL-CURE CATALYST
1 x 5 mL Bottle (267002)

MAX ETCH 35% PHOSPHORIC ACID
1 x 5 mL Syringe (345503)
1 x 30 mL Syringe (345302)

G5 ALL-PURPOSE DESENSITIZER
1 x 5 mL Bottle (226105)
1 x 10 mL Bottle (226110)

MICROBRUSHES (PURPLE)
1 x 50 Microbrushes (125500)

To view the latest news, education and more, visit:

www.clinicianschoice.com



 **Clinician's Choice®**
Designed for better dentistry.