



# Evanesce™

Nano-Enhanced Universal Restorative

RESTORATIVE



## Strong. Simple. Beautiful.

**Evanesce™ Nano-enhanced Universal Restorative** is a highly esthetic composite suitable for all classes of direct composite restorations, creating the ultimate in esthetic results.

- **Sculptable:** Evanesce's firmer viscosity is easily manipulated but won't slump. The unique viscosity makes it a great option in anterior and posterior cases.
- **Invisible Margins:** Evanesce's nano pigments and filler combination provide the ideal level of light refraction so the margins become invisible.
- **Long-Lasting Shine:** Evanesce's nano-hybrid formula produces a quick, high-gloss polish. Its long-lasting luster mimics surrounding tooth structure and indirect restorations.

The Evanesce system includes 3 non-VITA shaded composite Enamel FX shades which allow for matching virtually all degrees of translucent teeth commonly seen in today's dental practice.



### Evanesce *FX* Enamel White

- 70% opacity
- Reinforced microfill
- Used to create lingual shelf and small incisal defects, low-moderate translucency

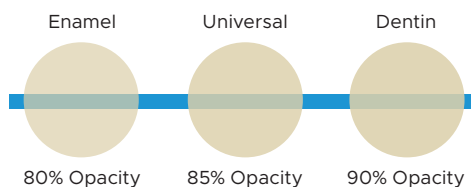
### Evanesce *FX* Enamel Incisal

- 60% opacity
- Nano-hybrid
- Incisal placement, medium translucency

### Evanesce *FX* Enamel Clear

- 50% opacity
- Reinforced microfill
- Enhance facial lobes, thin, clear coat, high translucency

## Opacities



## Shades

Evanesce™

ENAMEL (80% Opacity)											
A1E	A2E	A3E	A3.5E	B0.5E	B1E	B2E					
UNIVERSAL (85% Opacity)											
A1U	A2U	A3U	A3.5U	A4U	B0.5U	B1U	B2U	C1U	C2U	C3U	BL1U
											BL3U
DENTIN (90% Opacity)											
A1D	A2D	A3D	A3.5D	B1D	C4D						

Evanesce™ *FX* (Non-VITA)

FX White (70% Opacity)			FX Incisal (60% Opacity)			FX Clear (50% Opacity)		
------------------------	--	--	--------------------------	--	--	------------------------	--	--

Available Sizes      0.3g Single Dose      3g Syringes      4g Syringes

“Developing detailed morphology on anterior restorations is easier with Evanesce due to its no slump handling.”

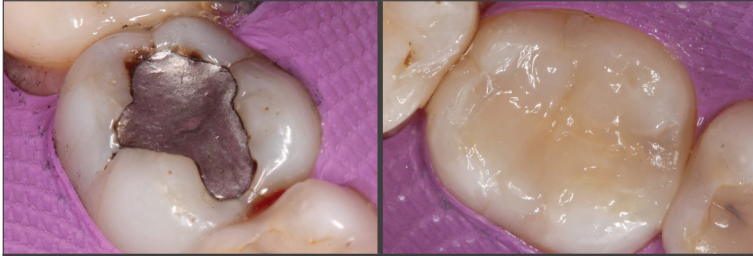
- Marcos Vargas, BDB, DDS, MS



**Clinician's Choice®**  
Designed for better dentistry.

## Posterior Class I

Dentistry and photography courtesy of Danièle Larose, DDS, AAACD



Evanesce packs beautifully into Class I and II preparations when compared to other composites—especially bulk fill materials. Superior non-slump handling allows you to create occlusal grooves and ridges; minimizing finishing time.

## Evanesce Match to Porcelain

Dentistry and photography courtesy of Danièle Larose, DDS, AAACD



Matching composite material to porcelain is a common clinical challenge. The Evanesce range of opacities and outstanding polishability make porcelain matching cases significantly easier.

## Multi-Shade Emergency Anterior Case

Dentistry and photography courtesy of Bob Margeas, DDS



Evanesce's putty-like handling allows for easy adaptation during placement and manipulation, yet is absolutely slump-free when you take your instrument or brush away, holding its form until you polymerize.

CLINICAL  
**Instant  
Replay**

**In a rush?**  
Watch this quick  
technique tip!

POWERED BY  
**Hands-On<sup>LINE</sup>**

Scan to watch

**Building Incisal Translucency in Anterior Restorations**  
David Chan, DDS, AAACD



Request a digital demonstration  
for you and your team  
[findtherestoration.com](http://findtherestoration.com)



Scan to Read  
Dental Advisor Editors' Choice  
++++½ Evaluation

**EVANESCE SINGLE DOSE TRIAL KIT (325902)**  
Contains: 10 x 0.3g single dose in shades:  
A1, A2, A3, A3.5, B1, instructions/SDS

**EVANESCE SYRINGE TRIAL KIT (325901)**  
Contains: 5 x 4g syringes in Universal shades:  
A1, A2, A3, A3.5, B1, instructions/SDS

**EVANESCE FX SINGLE DOSE TRIAL KIT (325904)**  
5 x 0.3g single dose: Enamel FX Incisal,  
Enamel FX White, Enamel FX Clear



**EVANESCE SINGLE DOSE 10PK**  
Contains: 10 x 0.3g single dose,  
instructions/SDS

A4 Universal (322505)  
B2 Universal (322507)  
C1 Universal (322508)  
C3 Universal (322510)  
BL1 Universal (322511)  
BL3 Universal (322513)  
B0.5 Universal (322536)

A1 Enamel (322514)  
A2 Enamel (322515)  
A3 Enamel (322516)  
A3.5 Enamel (322517)  
B0.5 Enamel (322537)  
B1 Enamel (322518)  
B2 Enamel (322519)  
A1 Dentin (322520)  
A2 Dentin (322521)  
A3 Dentin (322522)  
A3.5 Dentin (322523)  
B1 Dentin (322524)  
C4 Dentin (322526)  
Enamel FX White (322534)  
Enamel FX Incisal (322535)  
Enamel FX Clear (322533)

**EVANESCE SINGLE DOSE 20PK**  
Contains: 20 x 0.3g single dose,  
instructions/SDS

A1 Universal (322501)  
A2 Universal (322502)  
A3 Universal (322503)  
A3.5 Universal (322504)  
B1 Universal (322506)  
C2 Universal (322509)

**EVANESCE SYRINGES**  
Contains: 1 x syringe,  
instructions/SDS

A1 Universal (321501)  
A2 Universal (321502)  
A3 Universal (321503)  
A3.5 Universal (321504)  
B1 Universal (321505)  
B2 Universal (321522)  
C2 Universal (321506)  
A1 Enamel (321507)  
A2 Enamel (321508)  
B1 Enamel (321511)  
A2 Dentin (321517)  
Enamel FX Incisal (321515)  
Enamel FX White (321514)  
Enamel FX Clear (321513)

To view the latest news, education and more, visit:

[www.clinicianschoice.com](http://www.clinicianschoice.com)

**Clinician's Choice®**  
Designed for better dentistry.