

Bluewave™

Soft Tissue Diode Laser



Light the way to surgical accuracy

The **Bluewave™ Soft Tissue Diode Laser** is ready for any restorative or periodontal indication and features a unique blue guiding light which produces a higher contrast on oral tissue for increased accuracy.

- **Versatile:** The Bluewave is ideal for use as a surgical instrument or for non-invasive laser-assisted periodontal and hygiene therapy and offers virtually no bleeding, pain, post-operative swelling or discomfort.
- **Powerful & Portable:** This powerful 5W laser is completely portable, allowing for over three hours of use on its rechargeable lithium-ion battery.
- **Improved Comfort:** The magnetic handpiece easily attaches back on the base while its ergonomic design allows for greater comfort and less strain.

Lithium-ion rechargeable battery
up to 3 hours of continuous use
on every charge

Pre-programmed settings
for enhanced procedural efficiency

Ergonomic handpiece
curved design for greater
comfort and less strain

Disposable tips
(4mm and 9.5mm) easily
placed and removed

Blue aiming beam
for enhanced
contrast and visibility

Wireless foot pedal
for true portability and mobility

- Laser classification: Class IV laser device
- Delivery system: optical fiber
- Wavelength: laser 808 nm ± 5 nm
- Maximum power: 5 watts ± 20%
- Audible notification: yes
- 3-hour continuous lasing time at 1.2 watts
- 2-year warranty



“The Bluewave diode laser is powerful and simple to use and is easily portable from operator to operator.”

- Susan McMahon, DMD, AAACD, FAGD



Request a digital demonstration for you and your team:
demo.clinicianschoice.com/bluewave

BLUEWAVE SOFT TISSUE DIODE LASER (444000)

Contains: Bluewave desktop laser unit, power supply, wireless foot pedal, AA batteries for the foot pedal x 3, single-use diode laser sleeves for handpiece x 25, 4mm disposable tips x 5, safety glasses x 3, initiating film, user manual, **FREE** online training course

BLUEWAVE DISPOSABLE REGULAR 4MM TIPS 25pk (444006)

BLUEWAVE DISPOSABLE PERIO 9.5MM TIPS 25pk (444007)

BLUEWAVE SINGLE-USE DIODE LASER SLEEVES 25pk (444008)

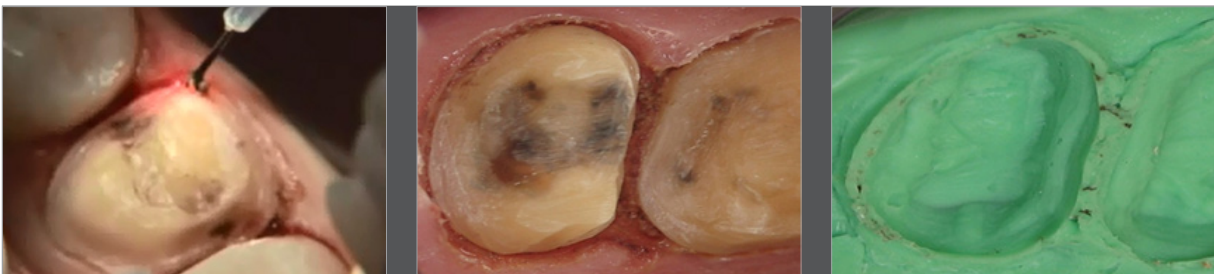
BLUEWAVE 810 DIODE LASER SAFETY GLASSES (444004)



Gingivectomy

Power: 1.0 watts | Mode: Continuous | Tip: Initiated

Removal of hyperplastic tissue can be done quickly and effectively without the use of sutures or scalpels. Final impressions for restorations can be completed in the same appointment, leading to predictable results with no additional patient discomfort.



Laser Troughing

Power: 1.0 watts | Mode: Continuous | Tip: Initiated

By using the Bluewave diode laser, practitioners are able to obtain bloodless impressions with clearly exposed margins within seconds, eliminating the need to pack cord. Lasing improves visualization of prepared crown margins and aids in hemostasis, resulting in a more accurate impression.



Esthetic Recontouring

Power: 1.0 watts | Mode: Continuous | Tip: Initiated

Remove excess gingival tissue easily with the use of a diode laser. Common gingival esthetic problems such as excessive gingival display or asymmetrical contours are corrected quickly and painlessly with minimal healing time.