

# Affinity™ Crystal

## Clear Matrix Impression Material



**Affinity™ Crystal** matrix impression material is ultra-durable, and easy to place. Its transparency allows the clinician to control flash formation, both interproximal and gingival, by visually verifying seating and adaptation of the filled matrix. Voids and air bubbles in the temporary composite material can also be detected easily.

With working time of 45 seconds and intraoral cure time that can be as short as 90 seconds (for a maximum procedure time of only 2:15 minutes), Affinity Crystal is far more efficient and accurate than traditional procedures using putty, alginate, and vacuum splints.

- Advanced silicone matrix material you can light-cure through.
- Prevents formation of interproximal and gingival flash.
- Transparent formula facilitates proper seating and detection of voids and air bubbles.
- Outstanding durability and tear strength.
- Ideal working and setting times.
- More efficient than traditional procedures using putty, alginate, and vacuum splints.



“ Affinity Crystal provides consistency and predictability to my workflow for injectable resin veneer and onlay procedures. The clarity is ideal for ensuring complete adaptation and seating in and out of the mouth and allow for photo polymerization of the resin through the matrix. ”

- Megan Shelton, DMD

## Clear Impression Trays

- Clear, non-perforated impression trays.
- Designed for use with Affinity Crystal to create a clear matrix for veneer temporaries.
- Available in: Universal Anterior, Full Arch Upper, Full Arch Lower, and quadrant trays (left and right).
- Available in 6- or 25-packs.



Dentistry and photography courtesy of Len Boksmen, DDS and Brad Carson, DDS



1. Two mottled centrals with a diastema to be treated with porcelain veneers. Length of right central incisor to be increased with electro surgery.



2. Fill a clear, non-perforated tray with Affinity Crystal.



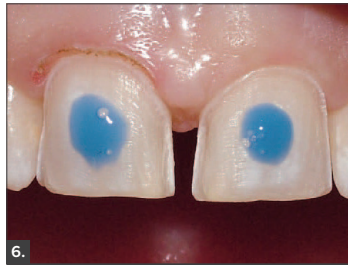
3. Place tray and Affinity Crystal on diagnostic stone model and leave to cure (1:30 minutes).



4. Affinity Crystal trimmed on labial 5mm past gingival margin and lingually 1mm past anticipated lingual cavo-surface margin.



5. Syringe a thixotropic flowable material directly into the facial/internal aspect of the clear matrix. Start at the incisal edge, working toward the cervical.



6. Spot etch preps for retention. If there are more than two preps, spot etch alternate teeth.



7. Gently place the matrix intraorally and adapt with both light incisal and labial pressure. Light-cure each preparation from the facial side of the matrix for 5 seconds per preparation. Remove the matrix.



8. Flash will be minimal, any excess will flow over the cervical margin and can be easily removed with a bladed instrument. Light-cure again for 20 seconds/unit.



9. Temporary veneers shown with excess flash peeled off.



10. Apply Glisten Provisional Resin Glaze and light-cure.



11. Final temporary veneers.

<p><b>AFFINITY CRYSTAL 2-PACK (021400)</b> Contains: 2 x 50mL cartridges, mixing tips, instructions/SDS</p>		<p><b>CLEAR IMPRESSION TRAYS FULL ARCH UPPER (MEDIUM)</b> 6-pack (036601) 25-pack (036251)</p>
<p><b>AFFINITY CRYSTAL 6-PACK (019916)</b> Contains: 6 x 50mL cartridges, mixing tips, instructions/SDS</p>	<p><b>QUADRANT (LEFT)</b> 6-pack (036604) 25-pack (036254)</p>	<p><b>FULL ARCH LOWER (MEDIUM)</b> 6-pack (036602) 25-pack (036252)</p>
<p><b>AFFINITY CRYSTAL 12-PACK (010912)</b> Contains: 12 x 50mL cartridges, instructions/SDS <i>*mixing tips not included</i></p>	<p><b>QUADRANT (RIGHT)</b> 6-pack (036605) 25-pack (036255)</p>	<p><b>UNIVERSAL ANTERIOR (UPPER/LOWER)</b> 6-pack (036603) 25-pack (036253)</p>

To view the latest news, education and more, visit:

[www.clinicianschoice.com](http://www.clinicianschoice.com)   

