

MACRO-LOCK® POST ILLUSION® X-RO®

from
RTD

POST & CORE

ENHANCED MICRO AND MACRO RETENTION

The **MACRO-LOCK® ILLUSION® X-RO®** features a rough surface topography, similar to etched enamel, to provide outstanding micro retention of the luting cement and core material. The **MACRO-LOCK ILLUSION X-RO** also incorporates several macro retentive features which include: circumferential grooves in the post parallel section to retain the core, two flat sides in the head design to prevent post rotation under load, and spiral grooves in the apical third of the post for an improved cement lock.

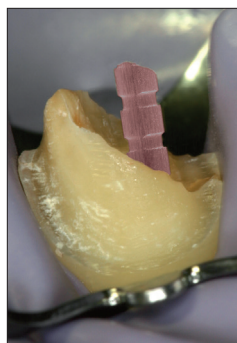
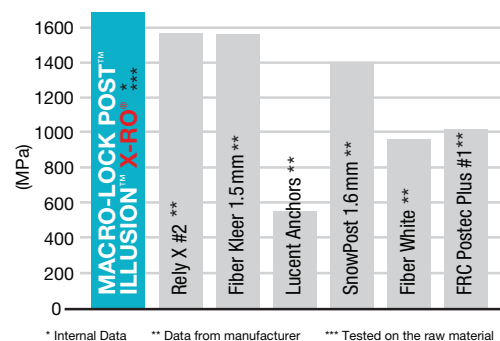
UNSURPASSED STRENGTH

MACRO-LOCK ILLUSION X-RO's flexural strength is at least 1800 MPa (FIG 1), making it the strongest fiber post on the market today. **MACRO-LOCK ILLUSION X-RO**'s incredible flexural strength coupled with an elastic modulus close to dentin (18 GPa) ensures the post will flex under load to prevent post fracture and, more importantly, reduce stress on the root - helping to prevent root fractures.

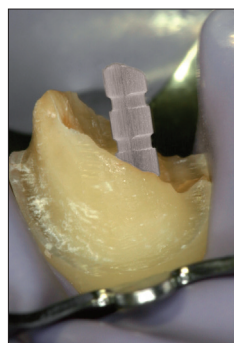
COLOR-ON-COMMAND ILLUSION TECHNOLOGY

The 4 sizes of **MACRO-LOCK ILLUSION X-RO** posts are color-coded for easy post/drill identification. Equally as important, the post color disappears after cementation; the post actually becomes translucent, providing ideal esthetics. In addition, this translucency guarantees optimum light transmission deep into the canal to ensure complete polymerization of the cement (see below). Should the post ever need to be removed, simply access the end of the post and spray cold water on it - the color instantly reappears. This color illusion technology provides you the exact size of the post to be removed, as well as the exact post location, so you can drill it out without removing any excess tooth structure.

FIG 1 - FLEXURAL STRENGTH



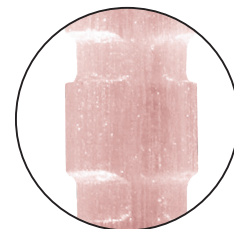
Upon seating, post color is apparent.



Post color disappears after intraoral temperature is reached.

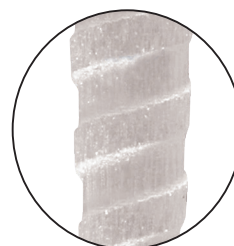
Dentistry and photography courtesy of Dr. Chelleux

Circumferential grooves for core retention



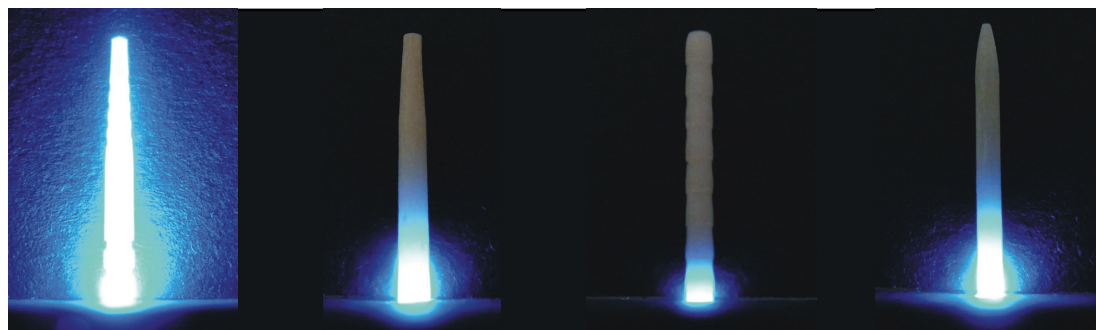
MACRO-LOCK ILLUSION X-RO color-coded at room temperature 72°F - for ease of use and identification

MACRO-LOCK COLOR ILLUSION post turns transparent during cementation



Spiral serration - for mechanical lock with cement

FIG 2 - SUPERIOR LIGHT TRANSMISSION



MACRO-LOCK

Exacto

FibreKor™

Glassix®

Exacto, FibreKor and Glassix are not trademarks of RTD or Clinician's Choice Dental Products, Inc.

Compendium of fiber post research available upon request.

CLINICIAN'S CHOICE®
DENTAL PRODUCTS INC.

www.clinicianschoice.com

MACRO-LOCK® POST

ILLUSION® X-RO®

from **RTD**



CLINICAL TECHNIQUE



Facial view of the initial case showing a failed PFM crown on tooth #9 (endo treated).



After crown removal, tooth preparation, and root canal prepared to receive a #1 Macro-Lock X-RO post, the canal is etched for 20 seconds, rinsed, and lightly dried with paper points.



Bonding agent is applied and light-cured.



A dual-cured resin cement is placed inside the canal from the bottom to the top avoiding trapping air bubbles.



Macro-Lock X-RO Post is inserted into the resin cement and light-cured.



A core buildup is fabricated using the same material selected for cementation.



Facial view. The colour of the Macro-Lock Illusion X-RO post has disappeared to ensure esthetics are not compromised.

Dentistry and photography courtesy of Dr. Robert Ritter

MACRO-LOCK ILLUSION FINISHING DRILL

#1 1pk
#2 1pk
#3 1pk
#4 1pk

MACRO-LOCK ILLUSION UNIVERSAL DRILL MACRO-LOCK ILLUSION UNIVERSAL DRILL #2

MACRO-LOCK ILLUSION X-RO TRIAL KIT
CONTAINS: 3 posts (#2), 1 finishing drill (#2), 1 universal drill

MACRO-LOCK ILLUSION X-RO INTRO KIT
CONTAINS: 20 posts (5 each of #1, #2, #3, and #4) and 6 drills (2 universal, 1 each of #1, #2, #3, and #4)

MACRO-LOCK ILLUSION X-RO POST REFILL KIT

#1 10pk
#2 10pk
#3 10pk
#4 10pk

CLINICIAN'S CHOICE®
DENTAL PRODUCTS INC.

www.clinicianschoice.com