

# Template<sup>®</sup> Clear

UNIVERSAL CLEAR MATRIX MATERIAL

## TEMPORIZATION

### PROVISIONAL FABRICATION JUST GOT EASIER

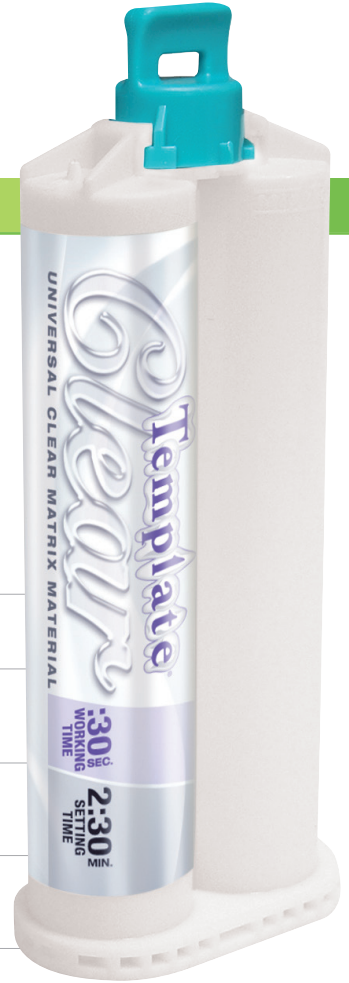
**TEMPLATE<sup>®</sup> CLEAR** from Clinician's Choice is specially designed for provisional veneer matrix fabrication. Unlike bite registration or putty materials, **TEMPLATE CLEAR** is more accurate and dramatically reduces provisional veneer fabrication time.

**TEMPLATE CLEAR** is water clear and provides excellent visibility throughout the fabrication process. Now you can visually verify that you have the right amount of provisional material for the case at hand, preventing voids or overfill situations that lead to more chair time. **TEMPLATE CLEAR** has excellent flow properties, capturing the most precise morphology and is especially effective at creating defined margins and minimizing flash.

**TEMPLATE CLEAR** is the very best matrix material for veneer temporaries. When used with Clinician's Choice clear, non perforated impression trays, you have a matrix with a window effect for the ultimate in clarity. This allows you to add more material if necessary to prevent voids, plus easy light-curing directly through the matrix.

Use **TEMPLATE CLEAR** in the anterior or posterior, for one or multiple restorations and no other material is better for the occlusal matrix technique for direct posterior composite restorations.

|  |
|--|
| <p><b>TEMPLATE CLEAR 2-PACK</b><br/>Contains: 2-50ML cartridges, instructions/SDS, mixing tips</p>   |
| <p><b>TEMPLATE CLEAR 6-PACK</b><br/>Contains: 6-50ML cartridges, instructions/SDS<br/><i>*mixing tips not included</i></p>                       |
| <p><b>TEMPLATE CLEAR 12-PACK</b><br/>Contains: 12-50ML cartridges, instructions/SDS<br/><i>*mixing tips not included</i></p>                     |
| <p><b>TEMPLATE MATRIX PACK</b><br/>Contains: 2-50ML cartridges TEMPLATE, 2-50ML cartridges<br/>TEMPLATE CLEAR, instructions/SDS, mixing tips</p> |



## CLEAR IMPRESSION TRAYS

- Clear, non-perforated impression trays
- Designed for use with **TEMPLATE CLEAR** and **AFFINITY CRYSTAL** to create a clear matrix for provisional veneers.
- Available in: Universal Anterior, Full Arch Upper, Full Arch Lower, and Quadrant trays (left and right)
- Available in 6- or 25-packs



Universal Anterior



Full Arch Lower



Full Arch Upper



Quadrant

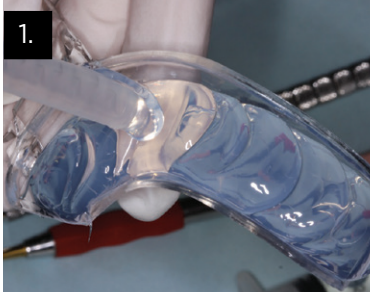
|                                  |                   |
|----------------------------------|-------------------|
| FULL ARCH UPPER (MEDIUM)         | 6-pack<br>25-pack |
| FULL ARCH LOWER (MEDIUM)         | 6-pack<br>25-pack |
| UNIVERSAL ANTERIOR (UPPER/LOWER) | 6-pack<br>25-pack |
| QUADRANT (LEFT)                  | 6-pack<br>25-pack |
| QUADRANT (RIGHT)                 | 6-pack<br>25-pack |

**CLINICIAN'S CHOICE<sup>®</sup>**  
DENTAL PRODUCTS INC.

# Template Clear

UNIVERSAL CLEAR MATRIX MATERIAL

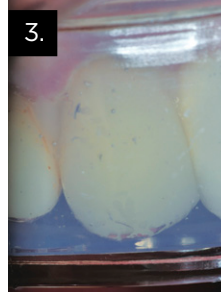
## CLINICAL TECHNIQUE



1. Template Clear is best used with a non-perforated tray for maximum clarity and can be used in full arch or sectional trays.



2. The Template Clear matrix demonstrating perfect clarity in the anterior.



3. Water clear Template Clear provides excellent visibility throughout the provisional process. After loading the tray with a provisional composite and reseating, potential voids are easily identified and if a light-cured provisional material is used (ie. veneer temps), Template Clear's clarity will allow light-curing directly through it.

*Dentistry and photography courtesy of Dr. Gildo Santos*

CLINICIAN'S CHOICE®  
DENTAL PRODUCTS INC.

[www.clinicianschoice.com](http://www.clinicianschoice.com)