



CLINICIAN'S CHOICE[®] FINISHING & POLISHING GUIDE



Indicated for COMPOSITE, CERAMICS, BISACRYL AND DENTURE ACRYLIC

ASAP

ALL SURFACE ACCESS POLISHERS



ONE SHAPE. ALL ACCESS. UNLIMITED SHINE.

The ideal polish provides life-like vitality to your esthetic restorations. It also promotes restorative longevity, prevents staining and improves tissue health along the margins. The challenge has always been how to achieve a great polish, quickly - until now!

A.S.A.P. All Surface Access Polishers from CLINICIAN'S CHOICE® provide the ultimate high shine, in less than a minute - with only one shape. These diamond-impregnated, flexible polishing spirals are designed for optimal adaptation to any surface, including difficult to reach areas, such as interproximal surfaces, and are ideal for use on most ceramics and zirconia, lithium disilicate, provisional materials and resin modified glass ionomers.

A.S.A.P. PRE-POLISHER

Embedded with diamond particles (44 microns), the **A.S.A.P. Pre-Polisher** (purple) gently diminishes small surface defects, without affecting anatomy, and prepares the surface for a final high gloss polish.

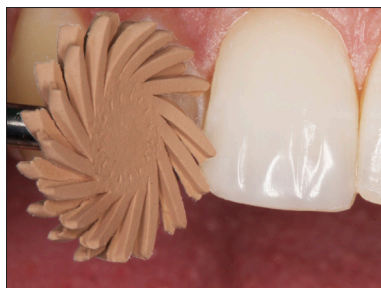
A.S.A.P. FINAL HIGH SHINE POLISHER

The second step to this time-saving technique is to apply light to moderate pressure in a circular motion over the restoration to create a smooth, final high luster surface. Each **A.S.A.P. Final High Shine Polisher** (orange) is embedded with small, 3-6 micron sized diamond particles to provide a life-like shine in as little as 20 seconds.

Autoclavable 30 times or more, **A.S.A.P. Polishers** are designed to withstand wear while providing an efficient and consistent polish use after use. **A.S.A.P. Polishers** are available in both a small (10mm) for pedodontic restorations and patients with a restricted bite, as well as a large (14mm) polisher, in a variety of kit and refill configurations.



A.S.A.P. Pre-Polisher



A.S.A.P. Final High Shine Polisher

Dentistry and photography courtesy of Dr. Danièle Larose

CLINICIAN'S CHOICE

Indicated for ALL CERAMICS

ASAP

INDIRECT+

ALL SURFACE ACCESS POLISHERS



The **ASAP INDIRECT+** diamond polishing system is all you need to refine and create an outstanding shine on all your indirect ceramic restorations. This versatile system is fast and simple; delivering a super high-gloss polish A.S.A.P.! Designed with a higher concentration of diamond particles and coupled with a durable silicone binder, the **ASAP INDIRECT+** system is ideal for today's harder indirect restorative surfaces.

Available in an intraoral (latch) option, the **ASAP INDIRECT+** Starter Kit includes three multi-shaped, diamond impregnated "adjusters", as well as two **ASAP INDIRECT+** diamond impregnated polishing wheels. To make minor adjustments or to remove scratches caused by diamond bur adjustments, the **ASAP INDIRECT+** Coarse Adjuster (grey); available in a disc, point or cylinder shape, can be used on any zirconia, lithium disilicate or ceramic prosthesis. Next, use the **ASAP INDIRECT+** Pre-Polisher (blue) to smooth the prosthetic surface and initiate an initial gloss. The final step of this technique, is to apply light pressure using the **ASAP INDIRECT+** Final Polisher (pink) to create a stunning high luster polished surface, in seconds!

ASAP INDIRECT+ All Surface Access Polishers can access any surface: occlusal, lingual, interproximal and facial, eliminating the need for multiple shapes.



1. To make minor adjustments or to remove scratches caused by diamond bur adjustments, the **ASAP INDIRECT+** Coarse Adjuster (available in a disc, point or cylinder shape) can be used on any zirconia, lithium disilicate or ceramic prosthesis.

2. The **ASAP INDIRECT+** Pre-Polisher is used to smooth the prosthetic surface and initiate an initial gloss.

3. The **ASAP INDIRECT+** Final Polisher creates a stunning high luster in seconds!

4. **ASAP INDIRECT+** restores a high luster polish on any zirconia, lithium disilicate or ceramic surface, in under a minute!

Dentistry and photography courtesy of Dr. Robert Lowe

CLINICIAN'S CHOICE

Indicated for COMPOSITE, PORCELAIN AND BISACRYL

GROOVY DIAMOND POLISHING BRUSHES



A PERFECT POLISH IN 30 SECONDS...GROOVY!

GROOVY Diamond® Polishing Brushes from CLINICIAN'S CHOICE® are diamond impregnated bristle brushes that create an ultra-high shine by polishing the surface grooves and detailed anatomy that you spend valuable chair time creating. The **GROOVY Diamond Polishing Brush** technique is simple and efficient and won't leave behind that lifeless flat surface that often occurs with disc finishing systems.

GROOVY OUTPOLISHES

GROOVY Diamond Polishing Brushes work faster than silicone rubber brushes and provide a higher shine. What's more, they will not lose their bristles like other polishing brushes. And with **GROOVY**, there's no need for multiple steps or messy polishing pastes.

GROOVY OUTLASTS

GROOVY Brushes can be autoclaved and re-used dozens of times. You'll get more polishes per brush and a better result each time when you choose **GROOVY Diamond Polishing Brushes** over silicone rubber brushes or other conventional polishers.

GROOVY OUTPERFORMS

GROOVY Diamond Polishing Brushes work on all nano and hybrid composites, porcelain, and bisacryl temporaries. They're truly universal!



1. Upper left central composite veneer after pre-contouring with Contour point.



2. Light, intermittent pressure with GROOVY Universal brush to create polish.



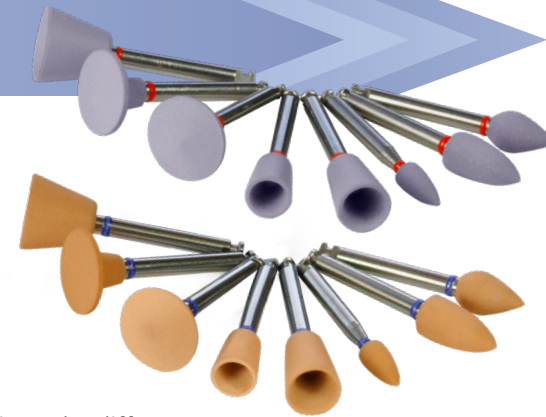
3. Final high luster shine created by GROOVY Polishing Brush.

Dentistry and photography courtesy of Dr. Robert Margeas

CLINICIAN'S CHOICE

Indicated for COMPOSITE OR CERAMICS

D•FINE DOUBLE DIAMOND POLISHING SYSTEM FOR HYBRID COMPOSITES AND PORCELAIN



ONE POLISHING SYSTEM FOR COMPOSITE (HYBRID & NANO) AND PORCELAIN

Gone are the days of stocking one polishing system for porcelain and a different one for nano and hybrid composites. **D•FINE Double Diamond™ Polishers** give you the freedom to effectively polish both surfaces with the same polisher.

DENTISTRY'S FIRST DIAMOND PRIMARY POLISHER

Each Primary Polisher (purple) is embedded with diamond particles (average particle size 45 microns) to help create a smooth surface topography on nano and hybrid composites and porcelain and to get a great initial shine in one easy step.

HIGH SHINE AT DOUBLE THE SPEED

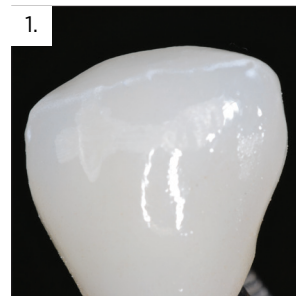
After the initial polish comes the final high shine polish. With an abundant diamond concentration, **D•FINE Double Diamond** Final High Shine Polishers (orange) also have a small 5 micron diamond particle size giving you a better shine in less time.

UNMATCHED FLEXIBILITY

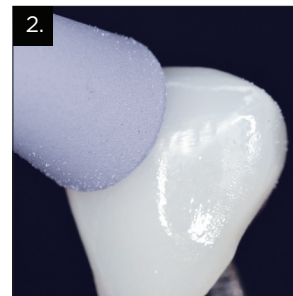
D•FINE Double Diamond polishers are designed to be flexible. When applied properly, the polishers will splay, closely hugging the surface topography and polishing (without the risk of ditching) the gingival margins.

INCREASED COST-EFFICIENCY

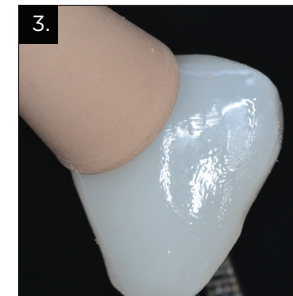
While many polishers wear out quickly after only a single use, **D•FINE Double Diamond** Polishers are autoclavable up to 275°F, and each polisher is designed to give you multiple polishes without compromising the performance. Using gentle pressure will extend the life of the polisher.



1. Facial view of e-max crown after occlusal adjustments. Note matte surface caused by the adjustments at the buccal-incisal area.



2. Using a light wiping motion, the D-Fine Double Diamond Primary Polisher is used to create the initial polish.



3. Using light pressure with the D-Fine Double Diamond Final High Shine Polisher creates the final high-gloss finish. Water spray is recommended.



4. The D-Fine Double Diamond final high shine achieved in about a minute of chair time.

Dentistry and photography courtesy of Dr. Gildo Santos

CLINICIAN'S CHOICE

Indicated for COMPOSITES

CONTOURS™

COARSE ANATOMY TRIMMERS



These 90 micron aluminum oxide coarse anatomy trimmers are designed to create secondary anatomy on your composite restorations. After you've created the gross anatomy with carbide or diamond burs, use **CONTOURS™ Coarse Anatomy Trimmers** for refining the gross anatomy, removing striations, and creating secondary grooves, lobes, and characterization in the restoration.



Before

After

Conventional polishers are inefficient and prone to premature wear. **CONTOURS** are unique in that they trim composite quickly, without significant degradation. Available in 6 shapes, **CONTOURS** are autoclavable and can be reused several times.



Indicated for COMPOSITES



D•FINE Shape & Shine™

SINGLE STEP DIAMOND POLISHERS

DEFINE, SHAPE & CREATE SHINE WITH A SINGLE POLISHER!

Time-saving **SHAPE & SHINE™** diamond impregnated polishers allow you to effortlessly shape, contour, and polish cured composite material, all in a single step!

D•FINE SHAPE & SHINE polishers feature 45 micron size diamond particles that conservatively contour composite when additional pressure is applied. During polishing, these diamond particles continuously break down, getting smaller in just seconds. The breakdown of microns creates submicrons which result in a high luster, unrivalled finish on all hybrid and nanofilled composite materials. With **SHAPE & SHINE**, minor contouring and polishing adjustments can now be made easily!

D•FINE SHAPE & SHINE Single Step Diamond Polishers are durably designed, providing between 6 to 10 uses per polisher, and can be autoclaved at 270°F to 275°F. Available in 6 shapes to facilitate all restorative requirements.



Before



After

CLINICIAN'S CHOICE®

FINISHING & POLISHING QUICK REFERENCE GUIDE

	NANO/ NANOHYBRID COMPOSITE	MICROFILL	PORCELAIN	ZIRCONIA	LITHIUM DISILICATE	BISACRYL	DENTURE ACRYLIC
	✓	✓	✓	✓	✓	✓	✓
	✓	✓	✓	✓	✓		
	✓	✓	✓			✓	
	✓	✓	✓	✓	✓		
	✓	✓					
	✓	✓					

SEE REVERSE PAGE FOR ORDERING INFORMATION

CLINICIAN'S CHOICE®

CLINICIAN'S CHOICE®



ASAP STARTER KIT

3 x Pre-Polishers Small, 3 x Pre-Polishers Large,
3 x Final High Shine Polishers Small,
3 x Final High Shine Polishers Large

ASAP 6-PACK REFILL

Small
Large

ASAP 2-PACK REFILL

Small
Large
1 x Pre-Polisher, 1 x Final High Shine Polisher

ASAP 3-PACK

Small Pre-Polisher
Large Pre-Polisher
Small Final High Shine Polisher
Large Final High Shine Polisher



ASAP INDIRECT+ INTRAORAL/RA STARTER KIT

Coarse Adjuster (1 ea: Point, Disc, Cylinder),
1 ea Pre-Polisher, Final Polisher

ASAP INDIRECT+ INTRAORAL/RA POLISHER REFILL
2-Pack. 1 ea: Pre-Polisher, Final Polisher

ASAP INDIRECT+ INTRAORAL/RA PRE-POLISHER REFILL
3-Pack. 3 x Pre-Polishers

ASAP INDIRECT+ INTRAORAL/RA FINAL POLISHER REFILL
3-Pack. 3 x Final Polishers

ASAP INDIRECT+ INTRAORAL/RA POINT ADJUSTER REFILL
3-Pack. 3 x Point Adjusters

ASAP INDIRECT+ INTRAORAL/RA CYLINDER ADJUSTER REFILL
3-Pack. 3 x Cylinder Adjusters

ASAP INDIRECT+ INTRAORAL/RA DISC ADJUSTER REFILL
3-Pack. 3 x Disc Adjusters

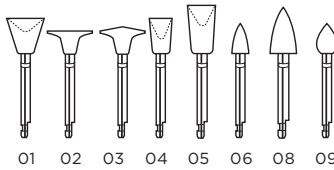


GROOVY MIX-PACKS

6-pack (2 Universal, 2 Mid-Size, 2 Occlusal)
Tri-Pack (4 Universal & 4 Occlusal, 4 Mid-Size)

GROOVY 6-PACKS

GROOVY Universal GROOVY Mid-Size
GROOVY Occlusal GROOVY Wheel



DOUBLE DIAMOND STARTER KIT

CONTAINS:
8 primary polishers, 8 final high shine polishers
(1 of each shape)

DOUBLE DIAMOND TRIAL KIT

CONTAINS:
6 primary polishers, 6 final high shine polishers.
Specify 1 shape:

Shape 01	Shape 05
Shape 02	Shape 06
Shape 03	Shape 08
Shape 04	Shape 09

DOUBLE DIAMOND PRIMARY POLISHER REFILL KIT

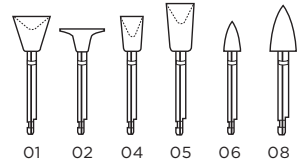
CONTAINS:
12 primary polishers. Specify 1 shape:

Shape 01	Shape 05
Shape 02	Shape 06
Shape 03	Shape 08
Shape 04	Shape 09

DOUBLE DIAMOND FINAL HIGH SHINE POLISHER REFILL KIT

CONTAINS:
12 primary polishers. Specify 1 shape:

Shape 01	Shape 05
Shape 02	Shape 06
Shape 03	Shape 08
Shape 04	Shape 09



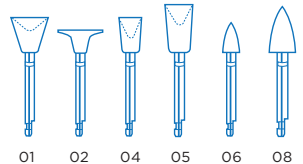
CONTOURS 12-PACK

12 Trimmers - 2 of each shape

CONTOURS 20-PACK

20 Trimmers - Single shape (specify shape)

#01	#05
#02	#06
#04	#08



SHAPE & SHINE TRIAL PACK

12 Polishers - 2 of each shape

SHAPE & SHINE REFILL PACK

10 Polishers - Single shape

#01	#05
#02	#06
#04	#08

CLINICIAN'S CHOICE®
DENTAL PRODUCTS INC.