

# Tissue Goo™

## Hemostatic Gel



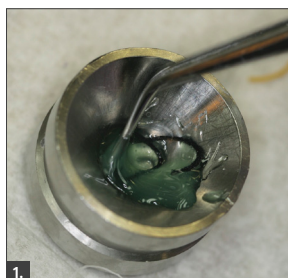
**Tissue Goo™** is a hemostatic gel that controls bleeding throughout the cord placement and tissue management processes. It stays where you place it and offers exceptional hemostasis without compromising the health of the gingival tissue.

- Tissue Goo's active ingredient is 25% aluminum sulfate which is kinder to soft tissue than other hemostatic agents.
- During the retraction cord placement, it acts as a lubricant by placing the Tissue Goo directly in the sulcus or by saturating the Re-Cord™ retraction cord, followed by gently packing the Re-Cord into the sulcus.
- Tissue Goo will not interfere with the set of your impression material.
- Gooseberry-flavored to make tissue management a more pleasant experience.
- Tissue Goo Big Shot is a 60mL refill syringe designed to allow you to refill your Tissue Goo 3mL syringe in just seconds without a mess.

## CLINICAL TECHNIQUE

*Dentistry and photography courtesy of Brad Carson, DDS.*

### Effective and Efficient Gingival Retraction using a Double Cord Technique



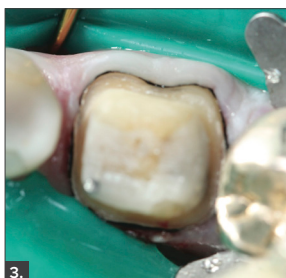
1.

Tissue Goo™ may be placed directly into the sulcus to control bleeding, however, if Re-Cord is saturated with Tissue Goo, it acts as a lubricant as well, ensuring easier placement of the retraction cord.



2.

Gently massage the cord into the bottom of the sulcus, making sure that the ends of the Re-Cord do not overlap but meet end to end.



3.

This occlusal view shows that the first cord meets end to end, but neither the Re-Cord nor the margins are entirely visible, indicating that a double cord technique is indicated.



4.

After saturating the second larger Re-Cord with Tissue Goo, it is placed over the first cord, to laterally displace the tissue. Only this cord is removed just prior to the impression.



5.

Note that the entire cavo-surface of the preparation is visible indicating sufficient retraction to capture the margin. Prior to impressing and cord removal, the preparation is treated with Detail™ to cleanse and alter the surface tension for the most accurate, detailed impression.

#### TISSUE GOO 4-PACK (641904)

4 x 3mL syringes Tissue Goo, 50 x 20 gauge needle tips, instructions/SDS

#### TISSUE GOO BIG SHOT (641960)

1 x 60mL syringe Tissue Goo, 4 x 3mL empty refillable syringes, instructions/SDS

#### TISSUE GOO/DETAIL TRIAL PACK (642403)

2 x 3mL syringes Tissue Goo, 2 x 3mL syringes Detail, needle tips, instructions/SDS



To view the latest news, education and more, visit:

[www.clinicianschoice.com](http://www.clinicianschoice.com)   

 **Clinician's Choice®**  
Designed for better dentistry.