

Template®



Ultra Quick Matrix Material



Faster, More Accurate Provisionals

Template® is an ultra quick, ultra accurate silicone matrix material specifically designed for fast and accurate provisional fabrication. Template flows into embrasure areas and into the finest morphology to capture superior detail and sets in only 30 seconds.

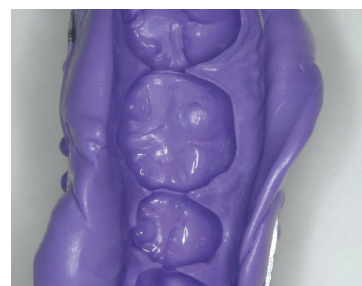
- A Template matrix provides superior detail to a putty or alginate matrix and requires no hand mixing or clean-up.
- Template's accuracy ensures a better fitting provisional with less flash and finishing time.
- Maintaining its stable form indefinitely, a Template matrix can be stored for re-use in the event of provisional refabrication.

Take a Template of the Lingual!

Most dentists repair Class III and IV defects only to find themselves struggling with finishing the lingual aspects of the restoration - during this struggle the clock keeps ticking. When you use Template and the Lingual Matrix Technique, you can pre-shape and refine the lingual surface while you're restoring the tooth, leaving only the polishing step to complete the restoration.



TempTray and Template are seated intraorally (30 second set).



An accurate and detailed matrix is created. Notice the sharp interproximal detail which decreases finishing time.

Dentistry and photography courtesy of Bob Margeas, DDS.

CLINICAL **Instant Replay**

POWERED BY **Hands-OnLine LIVE**

In a rush? Watch this quick technique tip!

Scan to watch

Pre-contouring Lingual and Incisal Contours: The Lingual Matrix Technique

Bob Margeas, DDS



“Template saves me valuable chair time when fabricating temporaries. Precise detail and accuracy combined with a 30-second set time makes Template my go-to matrix material.”

- Fred Peck, DDS, FAACD



TEMPLATE 50ML 4-PACK (028904)

Contains: 4 x 50mL cartridges, Mixing Tips, instructions/SDS

TEMPLATE 50ML 12-PACK (018912)

Contains: 12 x 50mL cartridges, instructions/SDS *mixing tips not included

TEMPLATE 50ML 36-PACK (018936)

Contains: 36 x 50mL cartridges, instructions/SDS *mixing tips not included

TEMPLATE 120ML 2-PACK (021812)

Contains: 2 x 120mL cartridges, 6 Dynamic Mixing Tips, instructions/SDS

PROVISIONAL CROWN CLINICAL TECHNIQUE

Dentistry and photography courtesy of Bob Margeas, DDS



1 Crown to be temporized.



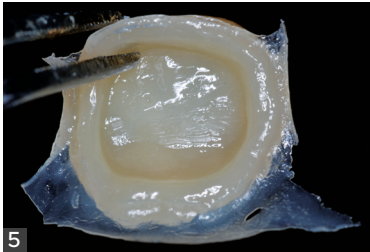
2 Template has ideal flow without slumping.



3 Inspire Esthetic Provisional Composite is extruded into the Template matrix. Template captures sharp marginal and occlusal detail and becomes rigid.



4 Inexpensive TempTrays are ideal for the Template matrix technique.



5 Template's accuracy results in minimal flash and finishing time.



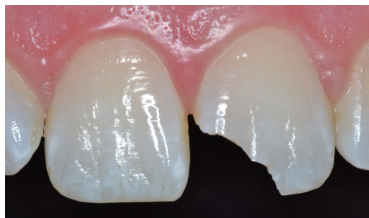
6 Inspire is strong, dense, and easy to finish (pre-polish shown).



7 In seconds, Inspire can be polished to an ultra-esthetic finish.

TEMPLATE LINGUAL MATRIX CLINICAL TECHNIQUE

Dentistry and photography courtesy of Gildo Santos, DDS



1 Initial case showing tooth #9 fractured.



2 After a mock-up restoration, the lingual and incisal surfaces were captured by a thick layer of Template.



3 After tooth preparation, etching, and bonding agent applied and light-cured, a nano filled composite was packed against Template matrix to form lingual shelf.



4 Dentin layer of a nano filled composite was used to replicate the "dentin" portion of the restoration.



5 Final layer of microfill composite (enamel shade) was placed to complete the restoration, cured, then polished.

To view the latest news, education and more, visit:

www.clinicianschoice.com   

 **Clinician's Choice**[®]
Designed for better dentistry.