

# Evanescence™ Flow

## Flowable Restorative



Offering preferred handling, high strength and amazing esthetics, **Evanescence™ Flow** is your solution to achieving better clinical outcomes for all minimally-invasive direct restorations.

- Thixotropic for excellent control, Evanescence Flow will not slump on a vertical surface making it suitable for Class V and temporary veneer restorations.
- Highly filled to give it strength, Evanescence Flow can be used as a stand-alone restorative or as a base/liner.
- Evanescence Flow is clearly distinguishable from composite on a radiograph for ease of diagnosis.
- Evanescence Flow is available in 3 opacities: Enamel (80%), Universal (85%) and Dentin (90%) and 10 VITA shades for procedural versatility.

### Evanescence Flow Shades and Opacities

Enamel Shades (80% Opacity)					
A1	A2	A3	B1		
Universal Shades (85% Opacity)					
A1	A2	A3	A4	B1	BL1
Dentin Shades (90% Opacity)					
		A2			

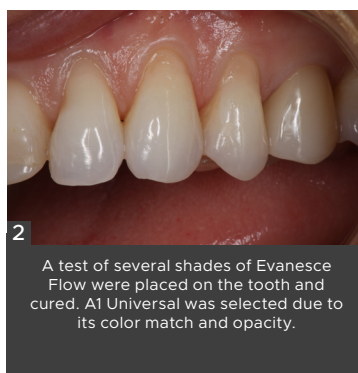
## CLINICAL TECHNIQUE

Dentistry and photography courtesy of Marc Geissberger, DDS, MA.



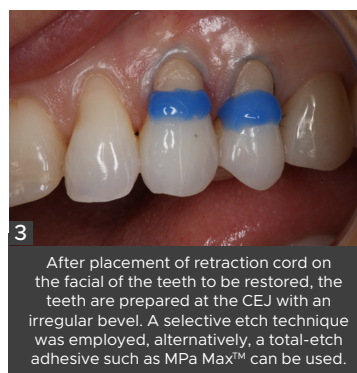
1

Class V lesions on the maxillary left cuspid and first bicuspid shows loss of tooth structure apical to the CEJ of the tooth.



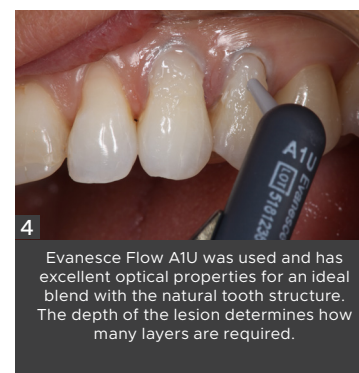
2

A test of several shades of Evanescence Flow were placed on the tooth and cured. A1 Universal was selected due to its color match and opacity.



3

After placement of retraction cord on the facial of the teeth to be restored, the teeth are prepared at the CEJ with an irregular bevel. A selective etch technique was employed, alternatively, a total-etch adhesive such as MPA Max™ can be used.



4

Evanescence Flow A1U was used and has excellent optical properties for an ideal blend with the natural tooth structure. The depth of the lesion determines how many layers are required.



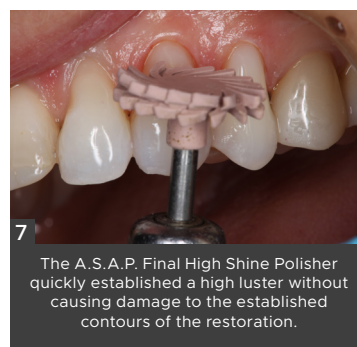
5

To establish initial contour of the restoration, a 12-fluted carbide finishing bur was employed.



6

Once contouring was completed, the restoration was polished using A.S.A.P. All Surface Access Polishers, a two step polishing system.



7

The A.S.A.P. Final High Shine Polisher quickly established a high luster without causing damage to the established contours of the restoration.



8

The final result.



“ Evanescence Flow has excellent optical properties resulting in an ideal blend with natural tooth structure. ”

- Marc Geissberger, DDS, MA



### EVANESCE FLOW 1.7g SYRINGE

Contains: 1 x 1.7g syringe, 5-19 gauge tips, instructions/SDS

A1 Universal (323517)  
 A2 Universal (323518)  
 A3 Universal (323519)  
 A4 Universal (323520)  
 B1 Universal (323521)  
 BL1 Universal (323525)  
 A1 Enamel (323501)  
 A2 Enamel (323502)  
 A3 Enamel (323503)  
 B1 Enamel (323505)  
 A2 Dentin (323511)

To view the latest news, education and more, visit:

[www.clinicianschoice.com](http://www.clinicianschoice.com)   

 **Clinician's Choice**  
 Designed for better dentistry.