

Re-Cord™

Knitted Retraction Cord



Effective tissue retraction is key to creating a space around the cavo-surface margin to adequately capture and record the detail in your impression and to assist in the fabrication of an accurate prosthesis.

Re-Cord™ non-impregnated retraction cord is a unique, 100% cotton knitted cord that is designed to compress easily when packing into the sulcus. Following placement, the knitted loops open which exerts a gentle continuous outward force, minimizing the trauma to the soft tissue preventing gingival recession and biological width impingement. Optimal tissue displacement can be achieved in as little as 3 minutes.

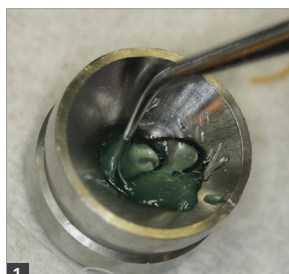
The unique design of **Re-Cord** allows it to carry significantly greater quantities of hemostatic solution than conventional cords as well as provides an excellent medium for hemostatic gel absorption and placement. Additionally, **Re-Cord** has no memory which facilitates easy packing and stays put when packed into the sulcus.

To further eliminate the “frustration factor” that comes with most cords, **Re-Cord** will not entangle in a diamond bur.

Re-Cord is available in 6 color-coded sizes and each bottle contains 8ft/244cm of cord.

CLINICAL TECHNIQUE

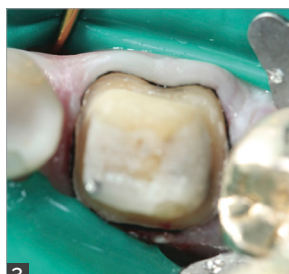
Dentistry and photography courtesy of Brad Carson, DDS.



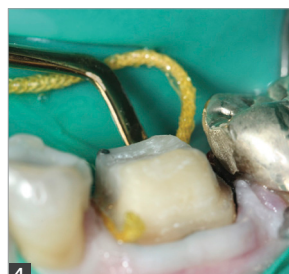
1 Tissue Goo™ Hemostatic Gel (Clinician's Choice®) may be placed directly into the sulcus to control bleeding, however, if Re-Cord is saturated with Tissue Goo, it acts as a lubricant as well, ensuring easier placement of the retraction cord.



2 Gently massage the cord into the bottom of the sulcus, making sure that the ends of the Re-Cord do not overlap but meet end to end.



3 This occlusal view shows that the first cord meets end to end, but neither the Re-Cord nor the margins are entirely visible, indicating that a double cord technique is indicated.



4 After saturating the second larger Re-Cord with Tissue Goo, it is placed over the first cord, to laterally displace the tissue. Only this cord is removed just prior to the impression.



5 Note that the entire cavo-surface of the preparation is visible indicating sufficient retraction to capture the margin. Prior to impressing and cord removal, the preparation is treated with Detail to cleanse and alter the surface tension for the most accurate, detailed impression.

RE-CORD KNITTED RETRACTION CORD

- #000 (649101)
- #00 (649102)
- #0 (649103)
- #1 (649104)
- #2 (649105)
- #3 (649106)