

Evanesce™

Nano-Enhanced Universal Restorative



For Restorations That Disappear

Evanesce™ Nano-Enhanced Universal Restorative from **Clinician's Choice®** is designed for both simple and complex cases. To **Evanesce** means to disappear gradually; vanish; fade away. True to its name, **Evanesce** composite blends effortlessly with natural dentition. Formulated with a proprietary process to optimize the refractive index of its unique nano pigments and fillers, you'll be amazed with its polishability and its ability to disappear or what we call its "Evanesce effect". Truly amazing esthetics can be easily achieved with **Evanesce** and its simple technique often requires only a single shade or, in more complex cases, fewer layers of composite.

Exceptional Handling

Beyond beautiful esthetics, **Evanesce** exhibits putty-like handling. With the assistance of rheological modifiers, **Evanesce** adapts during placement and manipulation, yet is absolutely slump-free when you take your instrument or brush away, holding its form until you polymerize. Now you can build the most detailed anatomy or place the thinnest layers, for an infinity edge, with ease.

Evanesce UX

When a lower viscosity is required, try **Evanesce UX**. Whether it's personal preference or the need to optimize adaptation in certain clinical cases, such as very conservative cavity preparations, **Evanesce** provides the clinician with added versatility. With an 85% universal/body opacity, UX shades can be used for single shade restorations or combined with other **Evanesce** opacities and Enamel *EX* shades for multi-layer cases. **Evanesce UX** is available in the most popular shades including A1, A2, A3, A3.5, B1, C2, and BL1.



Before



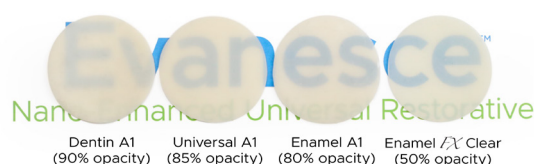
Anterior Build-Up and Shade Change

*Dentistry and photography courtesy of
Marcos Vargas, BDB, DDS, MS*

A Complete Restorative System

Truly a universal composite for both anterior and posterior cases, **Evanesce** is strong, has low shrinkage, and packs beautifully into Class I and II preparations. **Evanesce** is available in 30 VITA shades in three opacities options: Enamel (80%), Universal (85%) and Dentin (90%).

To further enhance esthetic enamel characterization, we've developed three non-VITA "Enamel *EX*" shades: Enamel White, Enamel Incisal, and Enamel Clear.



Evanesce *EX* Enamel White

- 70% opacity
- Reinforced microfill
- Used to create lingual shelf and small incisal defects
- Available in 0.25g single dose or 3g syringe

Evanesce *EX* Enamel Incisal

- 60% opacity
- Nano-hybrid
- Incisal placement
- Available in 0.25g single dose or 4g syringe

Evanesce *EX* Enamel Clear

- 50% opacity
- Reinforced microfill
- Enhance facial lobes
- Thin clear coat
- Available in 0.25g single dose or 3g syringe

Evanesce Shades & Opacities

UNIVERSAL SHADES (85% Opacity)												
A1	A2	A3	A3.5	A4*	B0.5*	B1	B2	C1*	C2	C3*	BL1*	BL3*
UX SHADES** (85% Opacity)												
A1UX*	A2UX*	A3UX*	A3.5UX*	B1UX*	C2UX*	BL1UX*						
DENTIN SHADES (90% Opacity)												
A1	A2	A3	A3.5	B1	C2	C4*						
ENAMEL SHADES (80% Opacity)												
A1	A2	A3	A3.5	B0.5*	B1	B2*	C2					
ENAMEL <i>EX</i> SHADES												
ENAMEL Incisal				ENAMEL White				ENAMEL Clear				

*Available in single dose only

**UX indicates a slightly lower viscosity



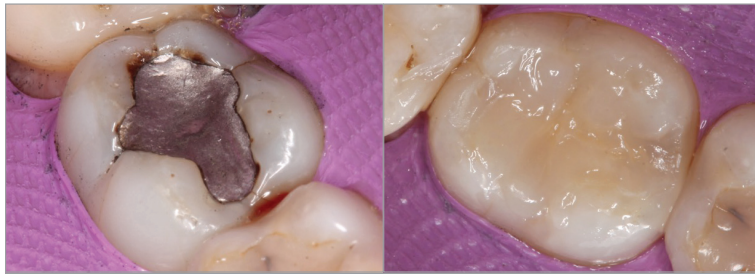
“A composite whose optical ‘chameleon’ properties allow it to blend seamlessly with the tooth. Evanesce makes all anterior composite restorations easier to match existing tooth color.”

— Robert Lowe, DDS

Scan here to request a digital demonstration



Posterior Class I Dentistry and photography courtesy of Daniele Larose, DDS, AAACD



Evanesce packs beautifully into Class I and II preparations when compared to other composites—especially bulk-fill materials. Superior non-slump handling allows you to create occlusal grooves and ridges; minimizing finishing time.

Match to Porcelain Dentistry and photography courtesy of Daniele Larose, DDS, AAACD



Matching composite material to porcelain is a common clinical challenge. The Evanesce range of opacities and outstanding polishability make porcelain matching cases significantly easier. Evanesce is a truly universal restorative system.

Multi-Shade Emergency Anterior Case

Dentistry and photography courtesy of Bob Margeas, DDS



Active adolescent presents with a second Class IV fracture.



A lingual shelf built with Evanesce Enamel FX White, followed by Evanesce A2 Dentin, opaquer, and then overlaid with Evanesce A1 Enamel. (Immediately post-op: shown before tooth re-hydration.)

Scan to watch
“Building Incisal Translucency in
Anterior Restorations,” with
David Chan, DDS, AAACD



TRUE™ DENTAL DAM - LATEX (BLUE)
5" x 5" 52-pack (838252)
6" x 6" 36-pack (838236)

NEW

TRUE™ DENTAL DAM - LATEX FREE (PURPLE)
5" x 5" 50-pack (838200)
6" x 6" 50-pack (838201)

NEW

RESINBLEND LV COMPOSITE BLENDING RESIN (151201)
1 x 3mL ResinBlend LV, instructions/SDS.

EVANESCE SYRINGE TRIAL KIT (325901)
Contains: 5 x 4g syringes in Universal shades:
A1, A2, A3, A3.5, B1, instructions/SDS

EVANESCE SINGLE DOSE TRIAL KIT (325902)
Contains: 5 x 0.25g single dose 10-packs in Universal shades:
A1, A2, A3, A3.5, B1, instructions/SDS

EVANESCE SINGLE DOSE 10PK
Contains: 10 x 0.25g single dose,
instructions/SDS

A4 Universal (322505)
B2 Universal (322507)
C1 Universal (322508)
C3 Universal (322510)
BL1 Universal (322511)
BL3 Universal (322513)
B0.5 Universal (322536)
A1 Enamel (322514)
A2 Enamel (322515)
A3 Enamel (322516)
A3.5 Enamel (322517)
B0.5 Enamel (322537)
B1 Enamel (322518)
B2 Enamel (322519)
A1 Dentin (322520)
A2 Dentin (322521)
A3 Dentin (322522)
A3.5 Dentin (322523)
B1 Dentin (322524)
C2 Dentin (322525)
C4 Dentin (322526)
Enamel FX White (322534)
Enamel FX Incisal (322535)
Enamel FX Clear (322533)

EVANESCE SINGLE DOSE 20PK
Contains: 20 x 0.25g single dose,
instructions/SDS

A1 Universal (322501)
A2 Universal (322502)
A3 Universal (322503)
A3.5 Universal (322504)
B1 Universal (322506)
C2 Universal (322509)
A1UX (323563)
A2UX (323564)
A3UX (323562)
A3.5UX (323565)
B1UX (323567)
C2UX (323568)
BL1UX (323569)

**UX indicates a slightly lower viscosity*

EVANESCE 4g SYRINGES
Contains: 1 x 4g syringe,
instructions/SDS

A1 Universal (321501)
A2 Universal (321502)
A3 Universal (321503)
A3.5 Universal (321504)
B1 Universal (321505)
B2 Universal (321522)
C2 Universal (321506)
A1 Enamel (321507)
A2 Enamel (321508)
A3 Enamel (321509)
A3.5 Enamel (321510)
B1 Enamel (321511)
C2 Enamel (321512)
A1 Dentin (321516)
A2 Dentin (321517)
A3 Dentin (321518)
A3.5 Dentin (321519)
B1 Dentin (321520)
C2 Dentin (321521)
Enamel FX Incisal (321515)
Enamel FX White (321514)
Enamel FX Clear (321513)



ResinBlend LV

Composite Blending Resin

Blending, adapting, shaping and contouring of composite prior to light-curing, all leads to decreased finishing time and a more esthetic composite restoration. Utilizing a composite lubricant can make this task more efficient and predictable. **ResinBlend LV** is a low viscosity, unfilled resin wetting agent which enables enhanced manipulation of all composites without altering their physical or optical properties.

- Eliminates composite pull back, stickiness
- Adds no thickness or composite seams/layers to the final restoration
- Is unfilled and Hema-free so that the original shade of the composite will not be compromised over time.
- Compatible with all composites