

PowerMix™

Automatic Impression Material Dispenser

Dispensing Power At Your Fingertips

Portable, fast and easy, the **PowerMix™ Automatic VPS Dispenser** from Clinician's Choice®, delivers perfectly mixed, void-free impression material with the press of a button. With **PowerMix**, now you can fill a full arch impression tray in just 10-15 seconds – no more hand pumping. The **PowerMix** design has a small footprint stand for storage or direct dispensing and can easily be transported from operator to operator.

All the Power With Less Waste

PowerMix 120mL cartridges are designed to reduce plastic waste and impression material left in the cartridge. Each 120mL **PowerMix** cartridge provides enough material to fill 3 full arch trays or 6-10 quadrant impression trays.

With **PowerMix** and 120mL cartridges, impression taking has never been more efficient or more accurate.



Benefits of PowerMix™ at a Glance

- Portable:** Easily transportable from one operatory to the next
- Lightweight:** Weighs 2lbs with full cartridge
- Versatile:** Extrudes materials chairside or dispense via its small stationary base
- Fast:** Provides an even mix, eliminating voids, and in a fraction of the time (10 seconds)
- Convenient:** Effortless tray loading without hand fatigue
- Rechargeable:** Fully charged, a single battery dispenses 8-10 full 120mL cartridges (up to 24 full arch impressions)

POWERMIX AUTOMATIC DISPENSER (031121)

Contains: PowerMix Dispenser Unit, Stand, AC Adapter, Instructions

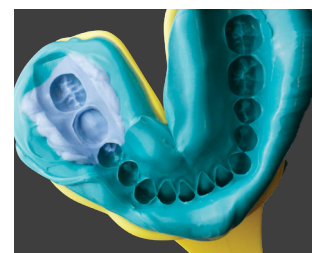
DYNAMIC MIXING TIPS FOR POWERMIX (033539)

Contains: 50 x Dynamic Mixing Tips



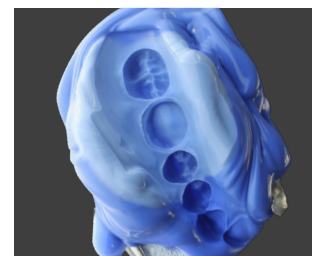
Affinity™ Heavy Body (Regular or Fast Set)

- Blends intimately with light body, leaving more wash on the preparation to maximize impression accuracy
- Ideal hydraulics to drive light body beyond the margins without over-displacement
- Impressions are more accurate and crowns fit better



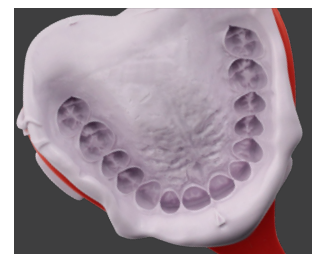
Affinity™ InFlex Maximum Support Tray Material (Regular or Fast Set)

- Rigid tray material designed to eliminate distortion for dual-arch impressions
- Fluid viscosity, without being runny, ensures that it blends perfectly with **Affinity Light Body** for consistently accurate impressions
- Becomes rigid and supportive once cured to reduce impression distortion



CounterFit™ II Multi-Purpose Replication Silicone

- Flows beautifully to capture exquisite detail for all alignate-type impressions
- Extremely high tear strength and an ideal durometer cure ensures interproximal tags do not fold during re-insertion
- Once polymerized, can be poured more than once and re-used, if necessary



Template® Ultra Quick Matrix Material

- Ultra-quick, ultra-accurate provisional matrix material
- Flows into embrasure areas and into the finest morphology to capture superior detail, ensuring less flash and finishing time
- Sets in only 30 seconds making it both doctor and patient friendly



AFFINITY HEAVY BODY REGULAR SET 120ML 2-PACK (023401)
Contains: 2 x 120mL Cartridges, 6 Dynamic Mixing Tips, Instructions/SDS

AFFINITY HEAVY BODY FAST SET 120ML 2-PACK (023406)
Contains: 2 x 120mL Cartridges, 6 Dynamic Mixing Tips, Instructions/SDS

AFFINITY INFLEX REGULAR SET 120ML 2-PACK (022401)
Contains: 2 x 120mL Cartridges, 6 Dynamic Mixing Tips, Instructions/SDS

AFFINITY INFLEX FAST SET 120ML 2-PACK (022406)
Contains: 2 x 120mL Cartridges, 6 Dynamic Mixing Tips, Instructions/SDS

COUNTERFIT II MULTI-PURPOSE REPLICATION SILICONE 120ML 2-PACK (275603)
Contains: 2 x 120mL Cartridges, 6 Dynamic Mixing Tips, Instructions/SDS

TEMPLATE ULTRA QUICK MATRIX MATERIAL 120ML 2-PACK (021812)
Contains: 2 x 120mL Cartridges, 6 Dynamic Mixing Tips, Instructions/SDS

NEW

NEW