

Evanescence™

Nano-Enhanced Universal Restorative



91%
overall
rating



For Restorations That Disappear

Evanescence™ Nano-Enhanced composite from **CLINICIAN'S CHOICE®** is designed for both simple and complex cases. To **Evanescence** means to disappear gradually; vanish; fade away. True to its name, **Evanescence** composite blends effortlessly with natural dentition. Formulated with a proprietary process to optimize the refractive index of its unique nano pigments and fillers, you'll be amazed with its polishability and its ability to disappear or what we call its "Evanescence effect". Truly amazing esthetics can be easily achieved with **Evanescence** and its simple technique often requires only a single shade or, in more complex cases, fewer layers of composite.

Exceptional Handling

Beyond beautiful esthetics, **Evanescence** exhibits putty-like handling. With the assistance of rheological modifiers, **Evanescence** adapts during placement and manipulation, yet is absolutely slump-free when you take your instrument or brush away, holding its form until you polymerize. Now you can build the most detailed anatomy or place the thinnest layers, for an infinity edge, with ease.

Evanescence UX

Evanescence UX shades offer additional options for placement featuring a slightly lower viscosity. Whether it's personal preference or the need to optimize adaptation in certain clinical cases, such as very conservative cavity preparations, **Evanescence** provides the clinician with added versatility. With an 85% universal/body opacity, UX shades can be used for single shade restorations or combined with other **Evanescence** opacities and Enamel *ℰ* shades for multi-layer cases. **Evanescence UX** is available in the most popular shades including A1, A2, A3, A3.5, B1, C2, and BL1.

A Complete Restorative System

Truly a universal composite for both anterior and posterior cases, **Evanescence** is strong, has low shrinkage (2%), and packs beautifully into Class I and II preparations. **Evanescence** is available in multiple VITA shades in three opacities options: Enamel (80%), Universal (85%) and Dentin (90%).

To further enhance esthetic enamel characterization, we've developed three non-VITA "Enamel *ℰ*" shades: Enamel White, Enamel Incisal, and Enamel Clear.

Evanescence Enamel *ℰ* White

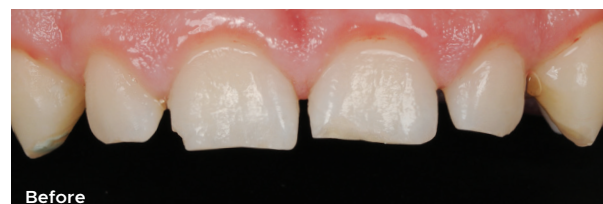
- 70% opacity
- Reinforced microfill
- Used to create lingual shelf and small incisal defects
- Available in 0.25g single dose or 3g syringe

Evanescence Enamel *ℰ* Incisal

- 60% opacity
- Nano-hybrid
- Incisal placement
- Available in 0.25g single dose or 4g syringe

Evanescence Enamel *ℰ* Clear

- 50% opacity
- Reinforced microfill
- Enhance facial lobes
- Thin clear coat
- Available in 0.25g single dose or 4g syringe



Before

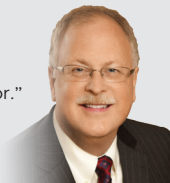


Anterior Build-Up and Shade Change

Dentistry and photography courtesy of Dr. Marcos Vargas

"A composite whose optical 'chameleon' properties allow it to blend seamlessly with the tooth. Evanescence makes all anterior composite restorations easier to match existing tooth color."

— Dr. Robert Lowe
Charlotte, NC

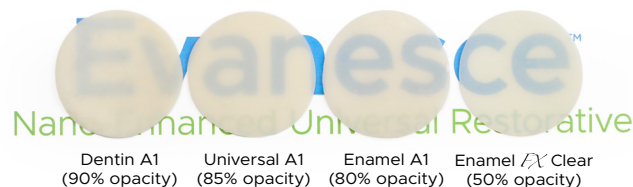


Evanescence Shades & Opacities

| UNIVERSAL SHADES (85% Opacity) | | | | | | | | | | | |
|--------------------------------|-------|-------|---------|--------------|-------|--------|-----|--------------|----|-----|------|
| A1 | A2 | A3 | A3.5 | A4' | B0.5' | B1 | B2 | C1' | C2 | C3' | BL1' |
| UX SHADES** (85% Opacity) | | | | | | | | | | | |
| A1UX' | A2UX' | A3UX' | A3.5UX' | B1UX' | C2UX' | BL1UX' | | | | | |
| DENTIN SHADES (90% Opacity) | | | | | | | | | | | |
| | A1 | A2 | A3 | A3.5 | B1 | C2 | C4' | | | | |
| ENAMEL SHADES (80% Opacity) | | | | | | | | | | | |
| | A1 | A2 | A3 | A3.5 | B0.5' | B1 | B2' | C2 | | | |
| ENAMEL <i>FX</i> SHADES | | | | | | | | | | | |
| ENAMEL Incisal | | | | ENAMEL White | | | | ENAMEL Clear | | | |

*Available in single dose only

**UX indicates a slightly lower viscosity



Dentin A1 (90% opacity) Universal A1 (85% opacity) Enamel A1 (80% opacity) Enamel *ℰ* Clear (50% opacity)

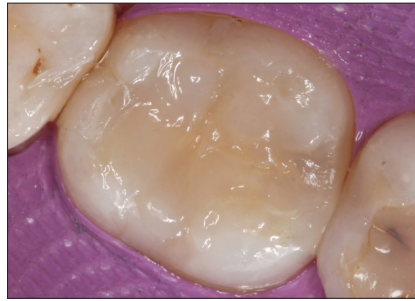
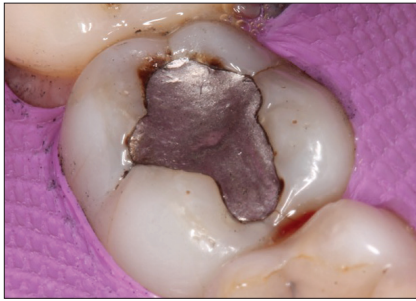


Clinician's Choice

Designed for better dentistry.

clinicianschoice.com

Posterior Class I Dentistry and photography courtesy of Dr. Daniele Larose



Evanesce packs beautifully into Class I and II preparations when compared to other composites—especially bulk-fill materials. Superior non-slump handling allows you to create occlusal grooves and ridges; minimizing finishing time.

Match to Porcelain Dentistry and photography courtesy of Dr. Daniele Larose



Matching composite material to porcelain is a common clinical challenge. The Evanesce range of opacities and outstanding polishability make porcelain matching cases significantly easier. Evanesce is a truly universal restorative system.

Multi-Shade Emergency Anterior Case Dentistry and photography courtesy of Dr. Robert Margeas



Active adolescent presents with a second Class IV fracture.



A lingual shelf built with Evanesce Enamel FX White, followed by Evanesce A2 Dentin, opaques, and then overlaid with Evanesce A1 Enamel. (Immediately post-op: shown before tooth re-hydration.)

EVANESCE SYRINGE TRIAL KIT

Contains: 5 x 4g syringes in Universal shades: A1, A2, A3, A3.5, B1, instructions/SDS

EVANESCE SINGLE DOSE TRIAL KIT

Contains: 5 x 0.25g single dose 10-packs in Universal shades: A1, A2, A3, A3.5, B1, instructions/SDS

EVANESCE ENAMEL FX SINGLE DOSE TRIAL KIT

Contains: 5 x 0.25g single dose each: Enamel FX White, Enamel FX Incisal, Enamel FX Clear, instructions/SDS

EVANESCE 4g SYRINGES

Contains: 1 x 4g syringe, instructions/SDS

A1 Universal
A2 Universal
A3 Universal
A3.5 Universal
B1 Universal
B2 Universal
C2 Universal
A1 Enamel
A2 Enamel
A3 Enamel
A3.5 Enamel
B1 Enamel
C2 Enamel
A1 Dentin
A2 Dentin
A3 Dentin
A3.5 Dentin
B1 Dentin
C2 Dentin
Enamel FX Incisal
Enamel FX White
Enamel FX Clear

EVANESCE SINGLE DOSE 20PK

Contains: 20 x 0.25g single dose, instructions/SDS

A1 Universal
A2 Universal
A3 Universal
A3.5 Universal
B1 Universal
C2 Universal

EVANESCE UX SINGLE DOSE 20PK

Contains: 20 x 0.25g single dose, instructions/SDS

A1UX
A2UX
A3UX
A3.5UX
B1UX
C2UX
BL1UX

EVANESCE SINGLE DOSE 10PK

Contains: 10 x 0.25g single dose, instructions/SDS

A4 Universal
B2 Universal
C1 Universal
C3 Universal
B0.5 Universal
BL1 Universal
BL3 Universal
A1 Enamel
A2 Enamel
A3 Enamel
A3.5 Enamel
B0.5 Enamel
B1 Enamel
B2 Enamel
A1 Dentin
A2 Dentin
A3 Dentin
A3.5 Dentin
B1 Dentin
C2 Dentin
C4 Dentin
Enamel FX White
Enamel FX Incisal
Enamel FX Clear

NEW

ResinBlend LV

Composite Blending Resin

Blending, adapting, shaping and contouring of composite prior to light-curing, all lead to decreased finishing time and a more esthetic composite restoration. Utilizing a composite lubricant can make this task more efficient and predictable. Unlike using a dental adhesive as a resin wetting agent, **ResinBlend LV** does not contain Hema which can lead to yellowing of the restoration over time. This low viscosity, unfilled resin wetting agent enables enhanced manipulation of all composites without altering their physical or optical properties. Any composite is more easily blended into the tooth structure or sculpted into the ideal form with just a small amount of **ResinBlend LV** on a composite instrument or brush.



- Apply **ResinBlend LV** sparingly to the composite instrument or brush for optimal manipulation of composite.
- **ResinBlend LV** is an unfilled resin exhibiting a very thin film thickness. This minimizes inadvertent pooling in slight concavities and grooves and leaves the integrity of the composite surface intact.
- **ResinBlend LV** is unfilled and Hema-free so that the original shade of the composite will not be compromised over time.
- **ResinBlend LV** is compatible with all composites.

RESINBLEND LV

1 x 3mL ResinBlend LV, instructions/SDS