

# DualForce™

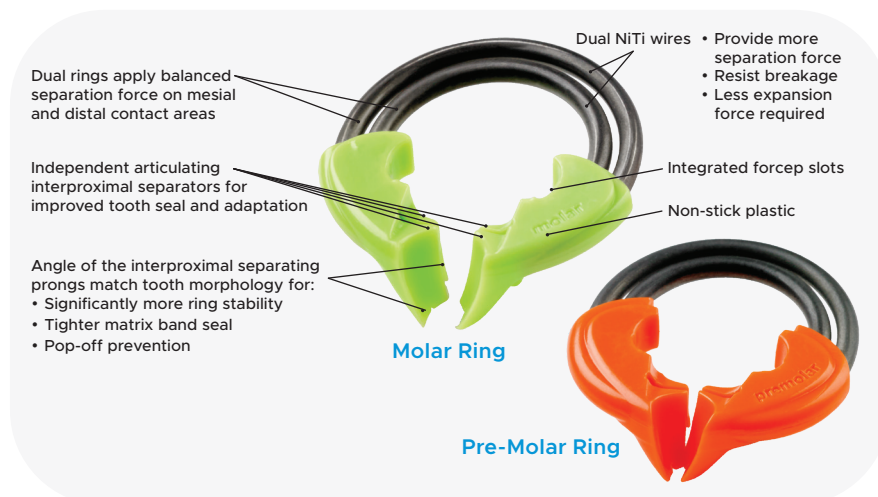
## Sectional Matrix System



Today's sectional matrix systems all have clinical challenges that can keep you from creating your best case scenario, such as:

- Excess flash that's difficult to finish (especially at the proximal box).
- Most rings fatigue over time, lose their separation force, and require re-tensioning, yet never regain their original strength.
- Most wedges just fill in the interproximal space, don't provide much separation force and don't always seal the matrix band tooth interface, resulting in flash.
- Many matrix bands do not properly wrap the tooth, making it difficult to restore teeth when part or all of a cusp is missing.

Engineered for more than just tight contacts, **DualForce™** is a complete matrix system designed to solve all of these clinical challenges so you can restore teeth more efficiently and effectively.



### DualForce Rings

**DualForce Molar and Pre-Molar Rings** are engineered using unique, dual nickel titanium wires that provide excellent balanced separation force on both mesial and distal surfaces. Using nickel titanium wire renders the **DualForce Rings** resistant to fatigue so you will have consistent separation force throughout the life of the ring.

**DualForce Rings** have 4 independent interproximal separating prongs that adapt better to the tooth morphology and exhibit the ideal engagement angle to ensure they are seated firmly and securely, resisting dislodgement. You'll notice less hand strain is required to open the rings, yet the resulting separation force on the teeth is stronger.

Everyone gets frustrated with trying to clean composite and adhesive from the rings—no more with **DualForce**. Autoclavable **DualForce Rings** resist composite and adhesive sticking.

### DualForce Active-Wedges™

**DualForce Active-Wedges** don't just fill a space; they actively engage the matrix band and adjacent tooth. Active-Wedges are designed to glide into position with a collapsing tip that re-opens once fully placed. The ideal Active-Wedge contour and strong internal spine places significant force on the matrix band to seal all margins and prevent flash while producing 2lbs of separating force. This means less finishing time. Featuring ISO color-coded sizing, Active-Wedges are available in five sizes to address all clinical situations, including a unique "Deep Seal" wedge that seals the matrix band at the proximal box interface better than any wedge you've ever used!



### DualForce Ultra-Wrap™ Matrix Bands

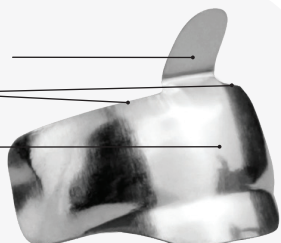
**DualForce Ultra-Wrap™ Sectional Matrix Bands** are made from .015" semi-hard stainless steel; thin yet rigid enough to resist crimping during placement. The single occlusal tab enables the Ultra-Wrap matrix band to be securely carried and placed, then easily folded away from the preparation to preserve access to the proximal box. This pre-contoured matrix places the contact in the optimal position while ensuring the natural oval shape of the contact itself.

Matrix tab for ease of placement

Curved marginal ridge to reduce finishing time

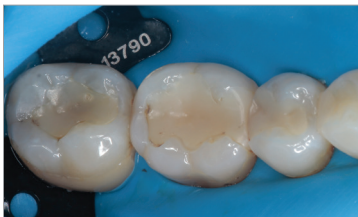
Proximal contour for optimal contact position

Available in 3 sizes:  
4.5mm, 5.5mm, 6.5mm



“DualForce is a sectional matrix system that intimately adapts the band to the margins of the preparation, eliminating flash and excessive adjustment during finishing.”

— **Dr. Robert Lowe**  
Charlotte, NC



**1** With rubber dam in place, pre-op view of Wide Class II on first molar requiring replacement.



**2** Ultra-Wrap matrix band in place extending well beyond the proximal line angles. Ultra-Wrap is made from .015" semi-hard stainless steel making it more resistant to crimping during placement.



**3** The Active-Wedge tip collapses during insertion for easy placement, then re-expands when fully seated, regaining full contour for an improved matrix band seal.



**4** Once seated, the DualForce Sectional Matrix System provides a complete gingival seal with a tight vertical seal of the matrix band along with a strong and stable separation force, resulting in less chance of composite flash.



**5** First increment of Evanesce Restorative material adapted to include Ultra-Wrap's pre-contoured occlusal lip, establishing an ideal rolling marginal ridge.



**6** Evanesce composite adapts to the internal surfaces of the preparation with excellent packability.



**7** Evanesce is easily sculpted with no slumping, efficiently and effectively establishing the ideal occlusal anatomy before the final curing.



**8** Diamond impregnated A.S.A.P. Pre-polisher initiates the 2 step polishing sequence in just 10-15 seconds.



**9** The A.S.A.P. Pre-polisher gently diminishes small surface defects without affecting anatomy.



**10** After just 10-15 seconds of polishing with the A.S.A.P. Final High Shine Polisher, the final esthetic restoration with an optimal proximal contact.

**TRUE™ DENTAL DAM - LATEX (BLUE)**  
5" x 5" 52-pack (838252)  
6" x 6" 36-pack (838236)

NEW

**TRUE™ DENTAL DAM - LATEX FREE (PURPLE)**  
5" x 5" 50-pack (838200)  
6" x 6" 50-pack (838201)

NEW

**RING FORCEPS (209009)**  
**PUNCH PLIERS (209013)**  
**MATRIX FORCEPS (209024)**

**ACTIVE-WEDGE INTRO KIT (209000)**  
Contains: 40 x each size wedge (#1, #2, #3, #4, #5)

**ACTIVE-WEDGE REFILL 100-PACKS**  
#1 (209001)  
#2 (209002)  
#3 (209003)  
#4 (209004)  
#5 (209005)

**RING 2-PACK REFILLS**  
Pre-molar (209007)  
Molar (209008)  
Assorted (209006)

**ULTRA-WRAP MATRIX BAND 100-PACK REFILLS**  
4.5mm (209018)  
5.5mm (209019)  
6.5mm (209020)

**ULTRA-WRAP MATRIX BAND TRIAL KIT (209023)**

**COMPLETE KIT WITH ULTRA-WRAP BANDS (209022)**  
Contains: 1 x Starter Kit, 1 x Punch Pliers, 1 x Ring Forceps.

**STARTER KIT WITH ULTRA-WRAP BANDS (209021)**  
Contains: 1 x Pre-Molar Ring (orange),  
1 x Molar Ring (green),  
25 x 4.5mm Ultra-Wrap Matrix Bands,  
25 x 5.5mm Ultra-Wrap Matrix Bands,  
25 x 6.5mm Ultra-Wrap Matrix Bands,  
20 x Active-Wedge #1 (Purple),  
20 x Active-Wedge #2 (White),  
20 x Active-Wedge #3 (Blue),  
20 x Active-Wedge #4 (Green),  
20 x Active-Wedge #5 (Black).