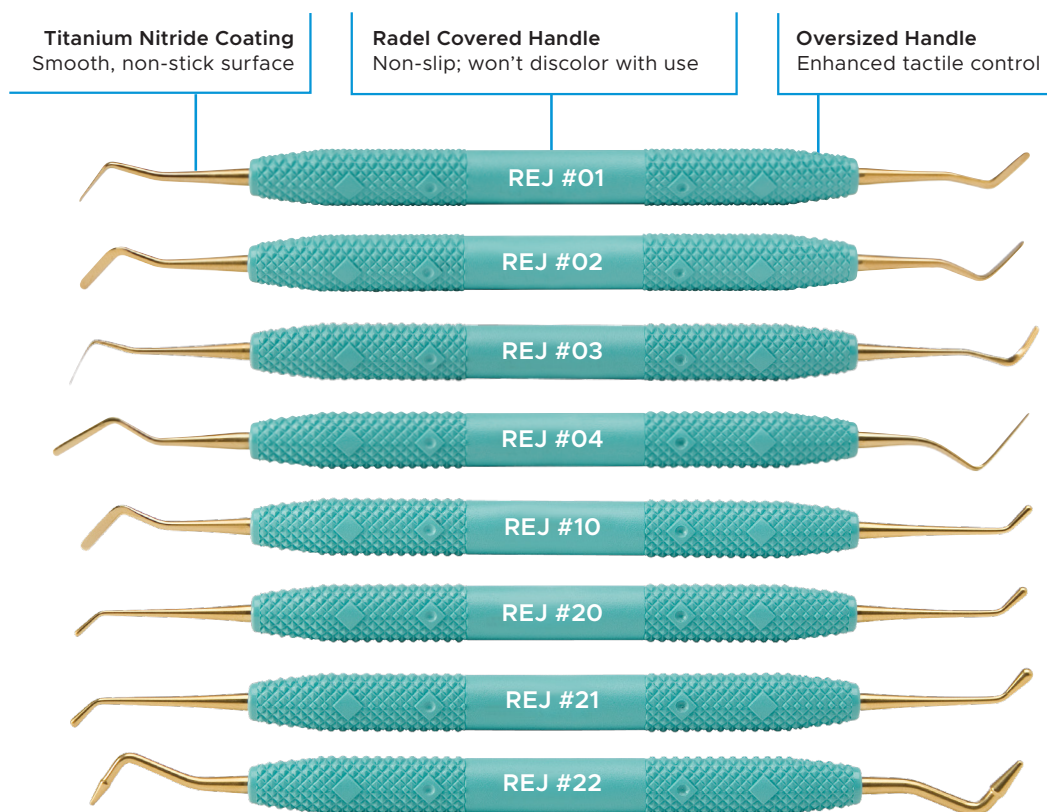


Dr. Ronald Jordan

Composite Instrument Series



There's nothing more frustrating than having composite stick to your instruments during placement. If you're using stainless steel instruments, the reason why composite pull back occurs is clear. Stainless steel – even when brand new – typically has micro-sized scratches that will cause the composite to stick to the instrument, making placement difficult and tedious. With designs that combine Dr. Ronald Jordan's original concepts (which dramatically changed direct restorative esthetics) with new advances in materials, the **Dr. Ronald Jordan Instrument Composite Series** guarantees you'll enjoy perfect placement every time, with enhanced handling and no pull back. The secret is their Titanium Nitride coating. Crafted from proprietary stainless steel for improved tip strength and outstanding flexibility, the instrument tips are saturated with a non-porous Titanium Nitride coating to ensure a non-stick, smooth surface for easy placement of the composite.



Comfortable & Reliable

The **Dr. Ronald Jordan Composite Instrument Series** feature oversized contoured handles made from Radel, so they're non-slip and perform predictably with gloved hands. Use of this material means the handles won't discolor with use, while the larger handle size provides enhanced tactile control and alleviates hand and muscle fatigue during longer procedures.

Wide Selection

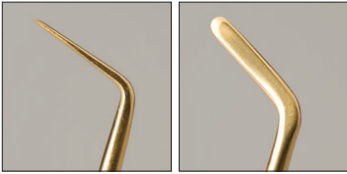
The **Dr. Ronald Jordan Composite Instrument Series** features eight instruments, which individually or as a set, will dramatically enhance your efficiency in posterior and anterior restorations.

PLEASE NOTE:
Once instruments are opened,
they cannot be returned.

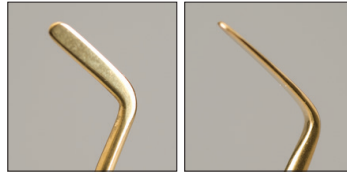
REJ COMPLETE SET

REJ #01	REJ #10
REJ #02	REJ #20
REJ #03	REJ #21
REJ #04	REJ #22

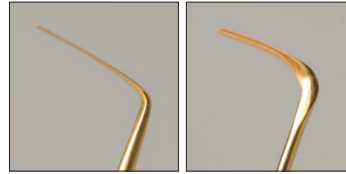
Anterior Instruments:

**REJ #01**

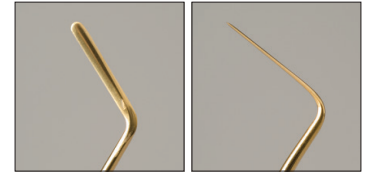
- Superior flexibility makes this perfect for labial, lingual, and gingival sculpting. This instrument features both a "hockey stick" shaped blade as well as a "beaver tail" shaped blade allowing for the placement of material in a more delicate manner.

**REJ #02**

- Designed for initial labial compaction and sculpting, the blades of the REJ #02 are slightly longer and wider than those of the REJ #01. While not designed for fine detailing, the blades are perfect for initial increment shaping.

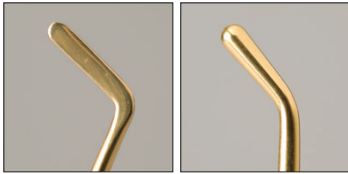
**REJ #03**

- An excellent choice for working interproximally or for packing retraction cord. The thin, highly flexible blade reaches under margins to hone and sculpt. It is also perfect when you need to delicately place composite in any critical location.

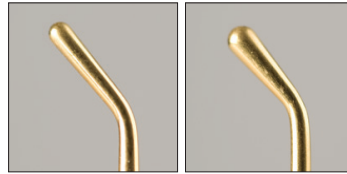
**REJ #04**

- Designed for interproximal shaping, it is ideal for shaping composites and embrasure areas of diastema closure restorations (it is not designed for packing composites).

Anterior/Posterior Instrument:

**REJ #10**

- Features a paddle end and a condenser end and is specifically designed for condensing into box preparations and carrying syringe material to the preparation site. The REJ #10 blade is slightly longer and wider than the REJ #02 blade. It is also excellent for contouring.

**REJ #20**

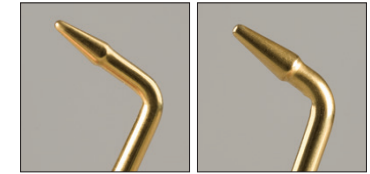
- A double-ended condenser, this instrument is perfect for condensing material in all box form preparations, and if you apply composite via compule. The instrument features two sizes of condenser (large and small) to facilitate macro and micro packing techniques.

Posterior Instruments:

Rounded tips spread composite material better and prevent pull back from sharp internal line angles.

**REJ #21**

- This is a double-ended condenser. Often after the composite has been inserted into the tooth, a change in instruments is required as the width of the cavity changes from the depth of the box into an extension of one of the fissures. Having this instrument on hand eliminates the need to search for another separate instrument.

**REJ #22**

- Designed for use on the occlusal anatomy, the rounded ends of the REJ #22 are ideal for sculpting composites and for pulling excess composite away from the cavo surface margin. Its pointed ends allow for delicate shaping of the inclines.



Clinician's Choice

Designed for better dentistry.

clinicianschoice.com