

Evanescence™

Nano-Enhanced Universal Restorative



For Restorations That Disappear

Evanescence™ Nano-Enhanced composite from **CLINICIAN'S CHOICE®** is designed for both simple and complex cases. To **Evanescence** means to disappear gradually; vanish; fade away. True to its name, **Evanescence** composite blends effortlessly with natural dentition. Formulated with a proprietary process to optimize the refractive index of its unique nano pigments and fillers, you'll be amazed with its polishability and its ability to disappear or what we call its "Evanescence effect". Truly amazing esthetics can be easily achieved with **Evanescence** and its simple technique often requires only a single shade or, in more complex cases, fewer layers of composite.

Exceptional Handling

Beyond beautiful esthetics, **Evanescence** exhibits putty-like handling. With the assistance of rheological modifiers, **Evanescence** adapts during placement and manipulation, yet is absolutely slump-free when you take your instrument or brush away, holding its form until you polymerize. Now you can build the most detailed anatomy or place the thinnest layers, for an infinity edge, with ease.

Evanescence UX

Evanescence UX shades offer additional options for placement featuring a slightly lower viscosity. Whether it's personal preference or the need to optimize adaptation in certain clinical cases, such as very conservative cavity preparations, **Evanescence** provides the clinician with added versatility. With an 85% universal/body opacity, UX shades can be used for single shade restorations or combined with other **Evanescence** opacities and Enamel *FX* shades for multi-layer cases. **Evanescence UX** is available in the most popular shades including A1, A2, A3, A3.5, B1, C2, and BL1.

A Complete Restorative System

Truly a universal composite for both anterior and posterior cases, **Evanescence** is strong, has low shrinkage (2%), and packs beautifully into Class I and II preparations. **Evanescence** is available in multiple VITA shades in three opacities options: Enamel (80%), Universal (85%) and Dentin (90%).

To further enhance esthetic enamel characterization, we've developed three non-VITA "Enamel *FX*" shades: Enamel White, Enamel Incisal, and Enamel Clear.

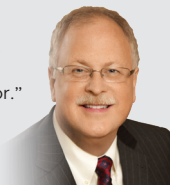


Anterior Build-Up and Shade Change

Dentistry and photography courtesy of Dr. Marcos Vargas

"A composite whose optical 'chameleon' properties allow it to blend seamlessly with the tooth. **Evanescence** makes all anterior composite restorations easier to match existing tooth color."

— Dr. Robert Lowe
Charlotte, NC



Evanescence Shades & Opacities

UNIVERSAL SHADES (85% Opacity)												
A1	A2	A3	A3.5	A4	B1	B2	C1	C2	C3	BL1	BL3	
UX SHADES** (85% Opacity)												
A1UX	A2UX	A3UX	A3.5UX	B1UX	C2UX	BL1UX						
DENTIN SHADES (90% Opacity)												
	A1	A2	A3	A3.5	B1	C2	C4					
ENAMEL SHADES (80% Opacity)												
	A1	A2	A3	A3.5	B1	B2	C2					
ENAMEL <i>FX</i> SHADES												
ENAMEL Incisal				ENAMEL White				ENAMEL Clear				

*Available in single dose only

**UX indicates a slightly lower viscosity

Evanescence *FX* Enamel White

- 70% opacity
- Reinforced microfill
- Used to create lingual shelf and small incisal defects
- Available in 0.25g single dose or 3g syringe

Evanescence *FX* Enamel Incisal

- 60% opacity
- Nano-hybrid
- Incisal placement
- Available in 0.25g single dose or 4g syringe

Evanescence *FX* Enamel Clear

- 50% opacity
- Reinforced microfill
- Enhance facial lobes
- Thin clear coat
- Available in 0.25g single dose or 3g syringe



Dentin A1 (90% opacity) Universal A1 (85% opacity) Enamel A1 (80% opacity) ENAMEL *FX*: Enamel Clear (60% opacity)

Multi-Shade Emergency Anterior Case

Dentistry and photography courtesy of Dr. Robert Margeas



Active adolescent presents with a second Class IV fracture.



A lingual shelf built with Evanesce Enamel FX White, followed by Evanesce A2 Dentin, opaquer, and then overlaid with Evanesce A1 Enamel. (Immediately post-op: shown before tooth re-hydration.)

Direct Composite Veneer

Dentistry and photography courtesy of Dr. Michael Miyasaki



This challenging fracture case was prepared only with air abrasion prior to the application of MaxEtch 35% Phosphoric Acid Etchant and MPa Max adhesive.



A remarkably esthetic result using only one single layer of Evanesce A1 Universal and A.S.A.P. All Surface Access Polishers. Note the perfect blending of Evanesce and tooth: the Evanesce effect.

Post-Ortho Case

Dentistry and photography courtesy of Dr. Daniele Larose



Pre-operative view showing uneven tooth wear due to pre-ortho malocclusion.



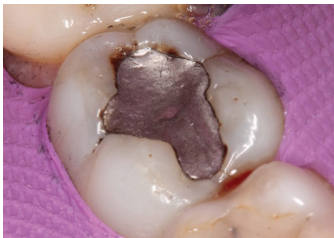
Evanesce A1 Enamel and Evanesce Fx Shade: Enamel Incisal are placed prior to finishing.



Final, polished Evanesce restoration immediately post-op.

Posterior Class I

Dentistry and photography courtesy of Dr. Daniele Larose



Evanesce packs beautifully into Class I and II preparations when compared to other composites — especially bulk-fill materials. Superior non-slump handling allows you to create occlusal grooves and ridges; minimizing finishing time.



Match to Porcelain

Dentistry and photography courtesy of Dr. Daniele Larose



Matching composite material to porcelain is a common clinical challenge. The Evanesce range of opacities and outstanding polishability make porcelain matching cases significantly easier. Evanesce is a truly universal restorative system.



EVANESCE SYRINGE TRIAL KIT

Contains: 5 x 4g syringes in Universal shades: A1, A2, A3, A3.5, B1, instructions/SDS

EVANESCE SINGLE DOSE TRIAL KIT

Contains: 5 x 0.25g single dose 10-packs in Universal shades: A1, A2, A3, A3.5, B1, instructions/SDS

EVANESCE UX SINGLE DOSE 20PK

Contains: 20 x 0.25g single dose, instructions/SDS

- A1UX B1UX
- A2UX C2UX
- A3UX BL1UX
- A3.5UX

EVANESCE SINGLE DOSE 20PK

Contains: 20 x 0.25g single dose, instructions/SDS

- A1 Universal
- A2 Universal
- A3 Universal
- A3.5 Universal
- B1 Universal
- C2 Universal

EVANESCE SINGLE DOSE 10PK

Contains: 10 x 0.25g single dose, instructions/SDS

- A4 Universal
- B2 Universal
- C1 Universal
- C3 Universal
- BL1 Universal
- BL3 Universal
- A1 Enamel
- A2 Enamel
- A3 Enamel
- A3.5 Enamel
- B1 Enamel
- B2 Enamel
- A1 Dentin
- A2 Dentin
- A3 Dentin
- A3.5 Dentin
- B1 Dentin
- C2 Dentin
- C4 Dentin
- Enamel FX White
- Enamel FX Incisal
- Enamel FX Clear

EVANESCE 4g SYRINGES

Contains: 1 x 4g syringe, instructions/SDS

- A1 Universal
- A2 Universal
- A3 Universal
- A3.5 Universal
- B1 Universal
- B2 Universal
- C2 Universal
- A1 Enamel
- A2 Enamel
- A3 Enamel
- A3.5 Enamel
- B1 Enamel
- C2 Enamel
- A1 Dentin
- A2 Dentin
- A3 Dentin
- A3.5 Dentin
- B1 Dentin
- C2 Dentin
- Enamel FX Incisal
- Enamel FX White
- Enamel FX Clear