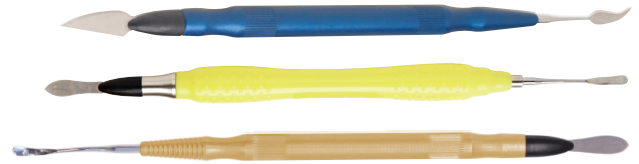


Clinician's Choice

Esthetic Contouring Instruments



Highly detailed anterior composite restorations require specifically designed instruments to properly manipulate and contour the material, especially along the cervical margins. The **CLINICIAN'S CHOICE® Esthetic Contouring Instruments** make anterior composite restorations easy!

Featuring a convex shaped paddle on one end, **Esthetic Contouring Instruments** allow you to spread the composite material across the facial plane for diastemas, Class IV, and Class V Restorations. With other instruments, manipulation of composite is more tedious and often results in an irregular composite surface. Often, it becomes necessary to go over the composite many times in an attempt to smooth the material, when traditional instruments are used. The convex surface of **Esthetic Contouring Instruments** have no edge to catch and pull the composite, allowing a smooth composite to tooth transition.



The convex paddle end allows for easy and smooth spreading of composite across the facial plane.

Gold Grip

Features convex paddle to spread composite across the facial plane for diastemas, Class IV and Class restorations. The long, flat, thin, flexible blade makes interproximal composite placement and manipulation a breeze.



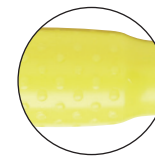
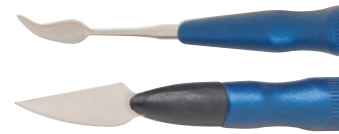
The long, flat blade aids in placing and manipulating composite interproximally.

Soft Grip

Featuring the same convex paddle and flat blade tips as the Gold Grip Instrument, the Soft Grip provides superior ergonomics by adapting to individual finger hold and positioning and is designed to withstand the autoclave long-term.

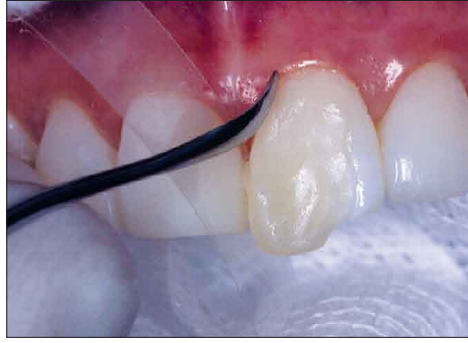
Blue Grip

Bladed end allows trimming of excess composite and to cut grooves into the material to create the illusion of enamel cracks. With its opposing blade, ripples can be created prior to cutting for better light reflection.



The Soft Grip Instrument limits effort to the fingers; minimizing degenerating movement of the shoulder and elbow.

CLINICIAN'S CHOICE ESTHETIC CONTOURING INSTRUMENT
 Gold Grip
 Blue Grip
 Soft Grip
 Gold Replacement Tip
 Blue Replacement Tip



The Gold and Soft Grip Instruments' permanent end is a sturdy, curved spoon shape, the back of which is ideal for shaping the curves of the lingual concavities. The front side is used to form the curvature at gum line or interproximal on the lingual side, and may also be used to carry material to the preparation.



The replaceable (black tip) end of the Gold and Soft Grip instruments is spatula-shaped and has been designed for use on the facial surfaces of maxillary incisors and the buccal of posterior teeth, or where there is a large and rounded surface. Excellent for adapting a gum line margin, it is also ideal for forming the gentle curve toward the interproximal and tooth's edge for esthetic highlighting.