

Composite Ninja

Maximize: Your Esthetic Composite Potential.
Minimize: Your Chairtime and Instrumentation.

The Versatile Placement, Shaping And Carving Instrument

One of the challenges of delivering high quality esthetic composite restoration is choosing and using the appropriate instrumentation. The stages of placement, shaping and contouring, and finishing require specific instrumentation for each specific function.

The **Composite Ninja** from **CLINICIAN'S CHOICE** was designed to perform the tasks of several composite instruments, all in one. The ergonomic **Composite Ninja** features an angulated, sharp, two-sided blade that allows the clinician to easily access any area of the tooth surface without an awkward rotation of the wrist. This unique flexible blade is longer than a traditional periodontal scaler and round-ended for deeper, atraumatic subgingival instrumentation.

Saving finishing time is essential to efficiency and profitably providing quality restorations. The **Composite Ninja** allows for adapting and shaping the composite prior to curing. Its multi-angled blade enables the tapering of the composite interproximally while establishing line-angles and blending the material into the natural tooth, forming a restoration that requires minimal post-curing adjustment. Even with utmost care and attention in placing the composite, it is rare to have a restoration free of composite or adhesive flash after curing. The use of a handpiece in these cases may be too aggressive and traumatic to the gingiva, and may alter surface anatomy. The **Composite Ninja** allows sensitive tactile feedback to the dentist while its long, sharp blade accurately and efficiently removes any unwanted material. Other restorative materials, such as glass ionomer and amalgam, can benefit from carving and sculpting as well as post-cure adjustments with the versatile **Composite Ninja**.

Procedural efficiency comes in many forms. Less instrumentation means less inventory, less set-up and less to sterilize. The **Composite Ninja** replaces the idea of a single instrument for a single purpose. Its scope of usefulness is only limited by the imagination.

The **Composite Ninja** instrument is available in 2 different handle styles: stainless steel, and all-new Comfort Grip.

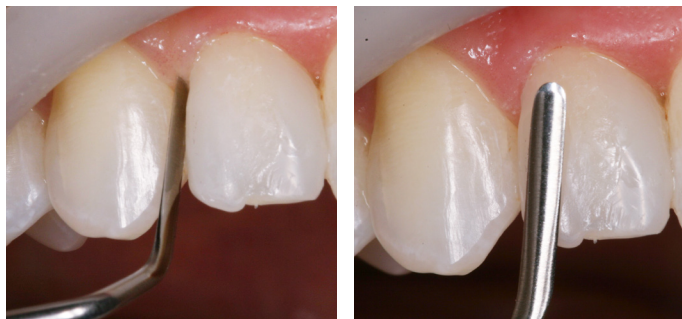
Designed by Dr. Les Kalman.

COMPOSITE NINJA INSTRUMENT

COMPOSITE NINJA COMFORT GRIP

CLINICAL TECHNIQUE

Anterior Application for Composite Placement and Contouring



Dentistry and photography courtesy of Dr. Robert Margeas

Posterior Removal of Cured Composite Flash

