

Bluewave™

Soft Tissue Diode Laser

NEW

Light the way to surgical accuracy

The **Bluewave™ Soft Tissue Diode Laser** lets you perform many soft tissue procedures with virtually no bleeding, pain, post-operative swelling or discomfort. This powerful 5W laser is completely portable, allowing for over three hours of use on its rechargeable lithium-ion battery. Ideal as a surgical instrument or for non-invasive laser-assisted periodontal and hygiene therapy – the **Bluewave** is a versatile and intuitive instrument for your every need. It features three pre-programmed settings (debride, perio, and cut) and one custom. Its unique blue guiding light produces higher contrast on oral tissues and blood than the traditional red beam, for increased surgical accuracy and efficiency. The **Bluewave** is an inexpensive, versatile, easy-to-use diode laser that's suitable for your entire team.

Lithium-ion rechargeable battery
with over 3 hours of continuous use on every charge

Pre-programmed settings
for enhanced procedural efficiency

Ergonomic handpiece
curved design for greater comfort and less strain

Disposable tips
(4mm and 9mm) easily placed and removed

Blue aiming beam
for enhanced contrast and visibility

Wireless foot pedal
for true portability and mobility

Specifications:

- Weight: 2.55 lbs
- Laser classification: Class IV laser device
- Delivery system: optical fiber
- Wavelength: laser 808 nm \pm 5 nm
- Maximum power: 5 watts \pm 20%
- Audible notification: yes
- 3-hour continuous lasing time at 1.2 watts
- 2-year warranty



BLUEWAVE SOFT TISSUE DIODE LASER (791-0668)

Contains: Bluewave desktop laser unit, power supply, wireless foot pedal, AA batteries for the foot pedal x 3, single-use diode laser sleeves for handpiece x 25, 4mm disposable tips x 5, safety glasses x 3, initiating film, user manual, FREE online training course

BLUEWAVE DISPOSABLE REGULAR TIPS 25PK 4mm (791-0676)

BLUEWAVE DISPOSABLE PERIO TIPS 25PK 9mm (791-0678)

BLUEWAVE SINGLE-USE DIODE LASER SLEEVES 25PK (791-0677)

BLUEWAVE 810 DIODE LASER SAFETY GLASSES (791-0674)

 **Clinician's Choice**
Designed for better dentistry.
clinicianschoice.com



Distributed Exclusively by:

 **HENRY SCHEIN®**
DENTAL

Bluewave™

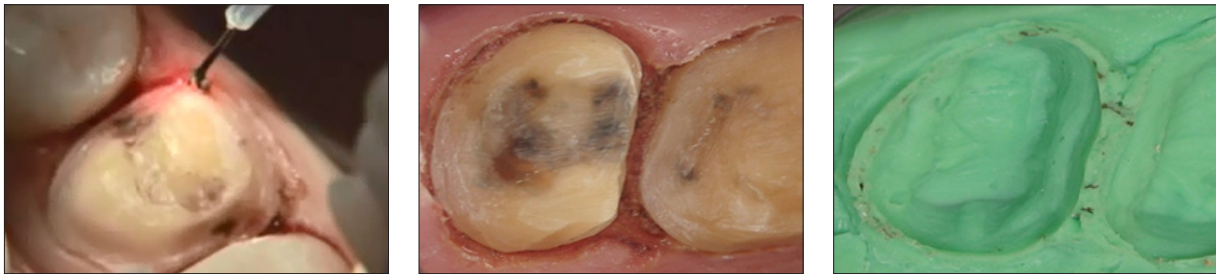
Soft Tissue Diode Laser



Gingivectomy

Power: 1.0 watts | Mode: Continuous | Tip: Initiated

Removal of hyperplastic tissue can be done quickly and effectively without the use of sutures or scalpels. Final impressions for restorations can be completed in the same appointment, leading to predictable results with no additional patient discomfort.



Laser Troughing

Power: 1.0 watts | Mode: Continuous | Tip: Initiated

By using the Bluewave diode laser, practitioners are able to obtain bloodless impressions with clearly exposed margins within seconds, eliminating the need to pack cord. Lasing improves visualization of prepared crown margins and aids in hemostasis, resulting in a more accurate impression.



Esthetic Recontouring

Power: 1.0 watts | Mode: Continuous | Tip: Initiated

Remove excess gingival tissue easily with the use of a diode laser. Common gingival esthetic problems such as excessive gingival display or asymmetrical contours are corrected quickly and painlessly with minimal healing time.