

# AFFINITY<sup>™</sup> *MULTI-Prep*<sup>®</sup>

**EXTENDED WORKING TIME**  
IMPRESSION MATERIAL



## IMPRESSIONS

Most poly vinyl siloxane impression materials today provide working times of anywhere between 1:30 to 2:00 minutes.

While suitable for single unit crowns, implants and standard 3-unit bridges, when working with multiple preparations, a shorter setting light body may begin to set – even before all preparations have been adequately syringed. Adding to the risk, testing has shown that some VPS materials set up to 25% faster in intraoral temperatures.\*

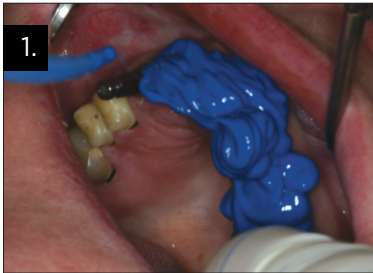
**MULTI-PREP<sup>®</sup>** from **CLINICIAN'S CHOICE<sup>®</sup>** provides a generous 2:40 minutes of working time so 6, 8 or even 12-units can be fully and properly syringed with far less risk of premature setting. Its advanced chemistry is heat-activated and once the tray is inserted, **MULTI-PREP** cures in just 4:30 minutes.

**MULTI-PREP's** grafted surfactant, uniformly distributed throughout the material, provides superior hydroactive performance. You'll capture marginal detail more consistently with **MULTI-PREP**, even with subgingival preparations.

The **MULTI-PREP** Wash Material flows beautifully under the hydraulics of the Tray Material to capture the finest of detail. You'll also notice more Wash Material remaining on each preparation, that's because the **MULTI-PREP** Tray Material has a slightly lower fluid viscosity. The result? The most consistently accurate impressions for larger cases.

\*ADA Professional Product Review: Elastometric Impression Material, v2. Issue: 3. Summer 2007.

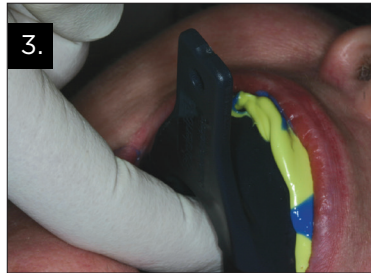
## CLINICAL TECHNIQUE



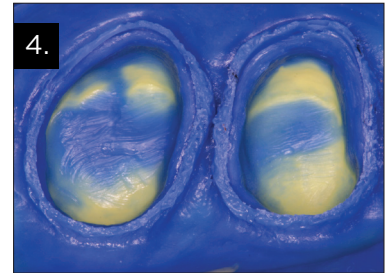
1. Multi-Prep Wash Material is syringed around the preparation.



2. Multi-Prep Tray Material is injected into a stock tray. Tray adhesive has been pre-applied to the tray.



3. Impression material and tray is inserted into the patient's mouth and stabilized without pressure.



4. Note excellent detail, accuracy, and visual readability of margins in Multi-Prep.

Dentistry and photography courtesy of Dr. Jason Bortolussi.

**CLINICIAN'S CHOICE<sup>®</sup>**  
DENTAL PRODUCTS INC.

[www.clinicianschoice.com](http://www.clinicianschoice.com)