



&



RESTORATIVE

## PRODUCE NATURALLY CONTOURED INTERPROXIMAL CONTACTS

Using regular matrix bands to restore interproximal restorations is always difficult because most matrix bands are flat occluso-gingivally. Even when the contact is burnished, the matrix band seldom holds its shape. This leads to flat interproximal contours, where the contact point is translocated high occlusally. This contact is often broken when creating occlusal embrasure form, or prematurely breaks down under normal occlusal forces.



**Convexi-T™ Convex Tofflemire™ Matrix Bands** are pre-contoured buccal/lingually and occlusal/gingivally and are available in two options. **Convexi-T** matrix bands are 0.025mm thick and are dead soft, allowing them to be further contoured if necessary. The **Convexi-T S2** (stainless steel) matrix bands are slightly more rigid at 0.04mm thick, facilitating easy placement when preparations are tight - even having the ability to push through a partially closed preparation. Both options will provide a tighter and more naturally contoured contact for your Class II restorations.

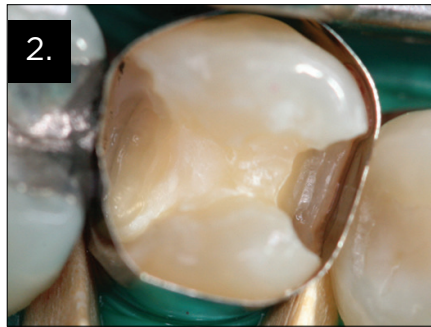
Both versions of **Convexi-T** matrix bands, available in widths of 5.5mm and 6.3mm, facilitate the creation of interproximal contours necessary to recreate the contact areas and natural convex anatomy of the interproximal area.

CLINICAL TECHNIQUE

### MOD COMPOSITE RESTORATION



1. MOD cavity preparation with wide distal box.



2. 6.3mm Convexi-T band applied showing contact and convex embrasure forms.



3. MOD composite restoration on tooth #29 with ideal contact and embrasure form.

*Dentistry and photography courtesy of Dr. Len Boksman and Dr. Brad Carson.*

CLINICIAN'S CHOICE®  
DENTAL PRODUCTS INC.